



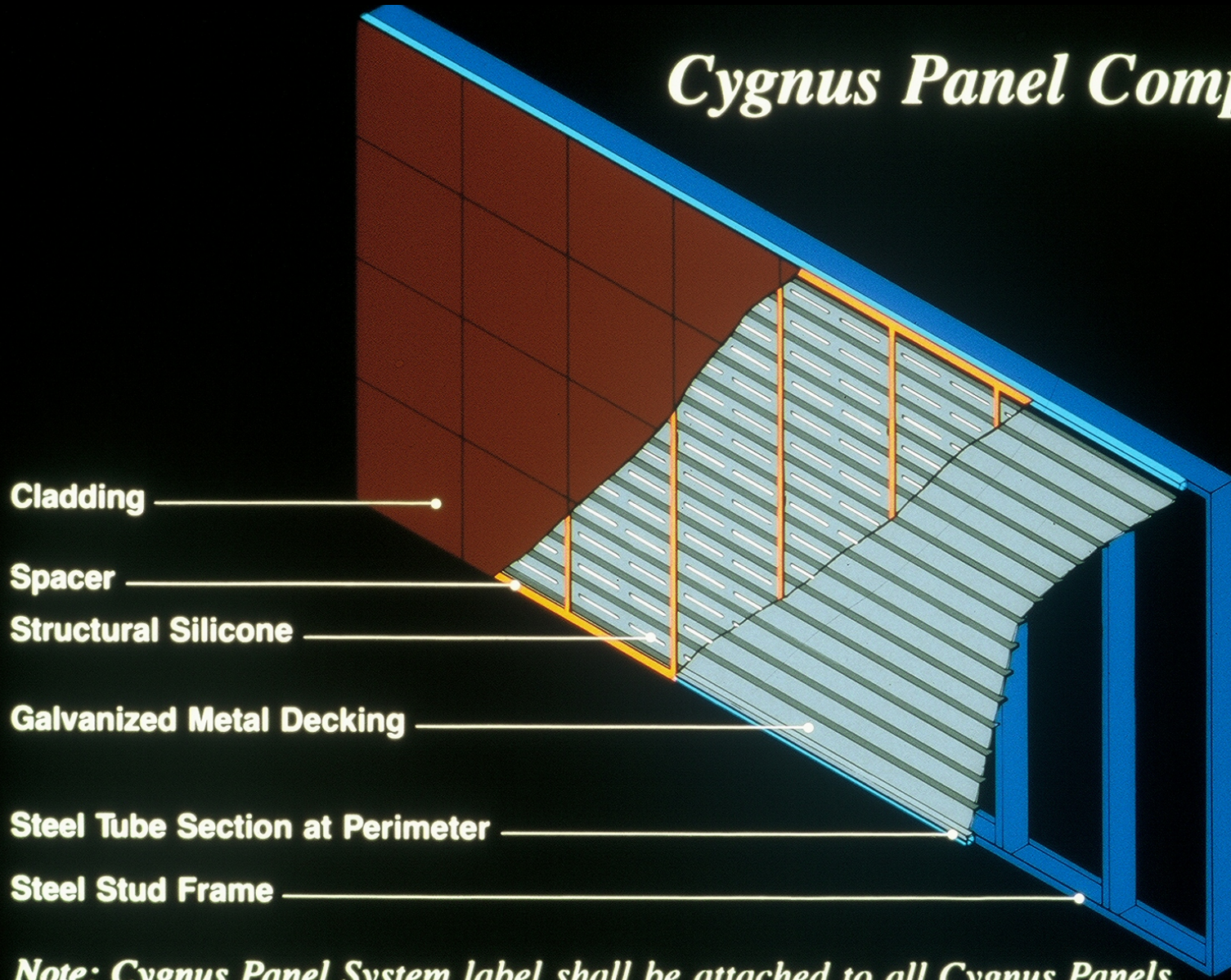
CYGNUS *Panel System*

Mission / Vision

- Unique, tested, patented exterior wall system
- **Cost effective, green, durable, panelized**
- Partners: Tom Obermeier, Aleksandr Sheykhet, Bill Loper, Gary Paoli
- System Origins
 - Desire to Install Large Tile on Exterior
 - Buchtal Kerion System
 - Panelization for Cost effectiveness
- Patents: 1986-2001
- Now: Cygnus 2010



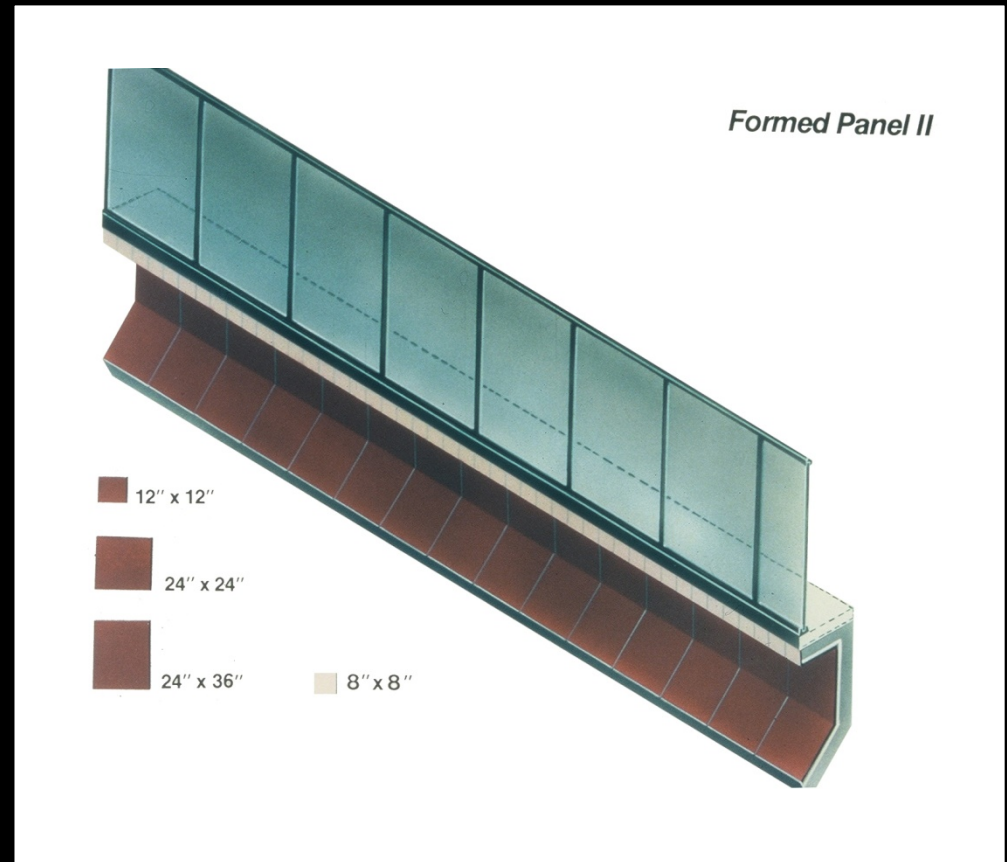
Cygnus Panel Composition



Note: Cygnus Panel System label shall be attached to all Cygnus Panels.

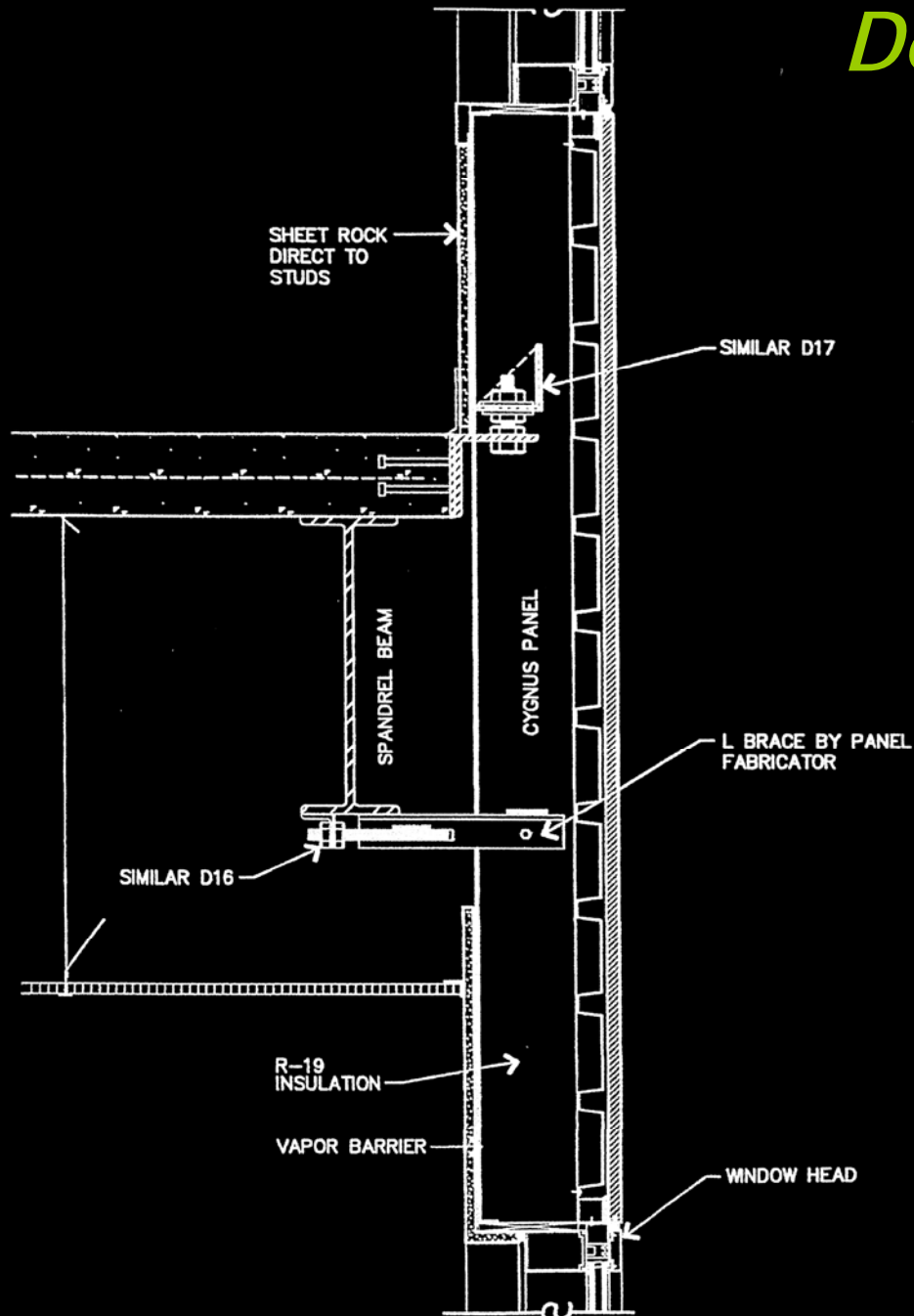
Cygnus Options

- Tile or Stone
- Surface Waterproofed System
- Rain Screen System
- Thermally Broken System
 - LEEDwall
 - Canada Wall



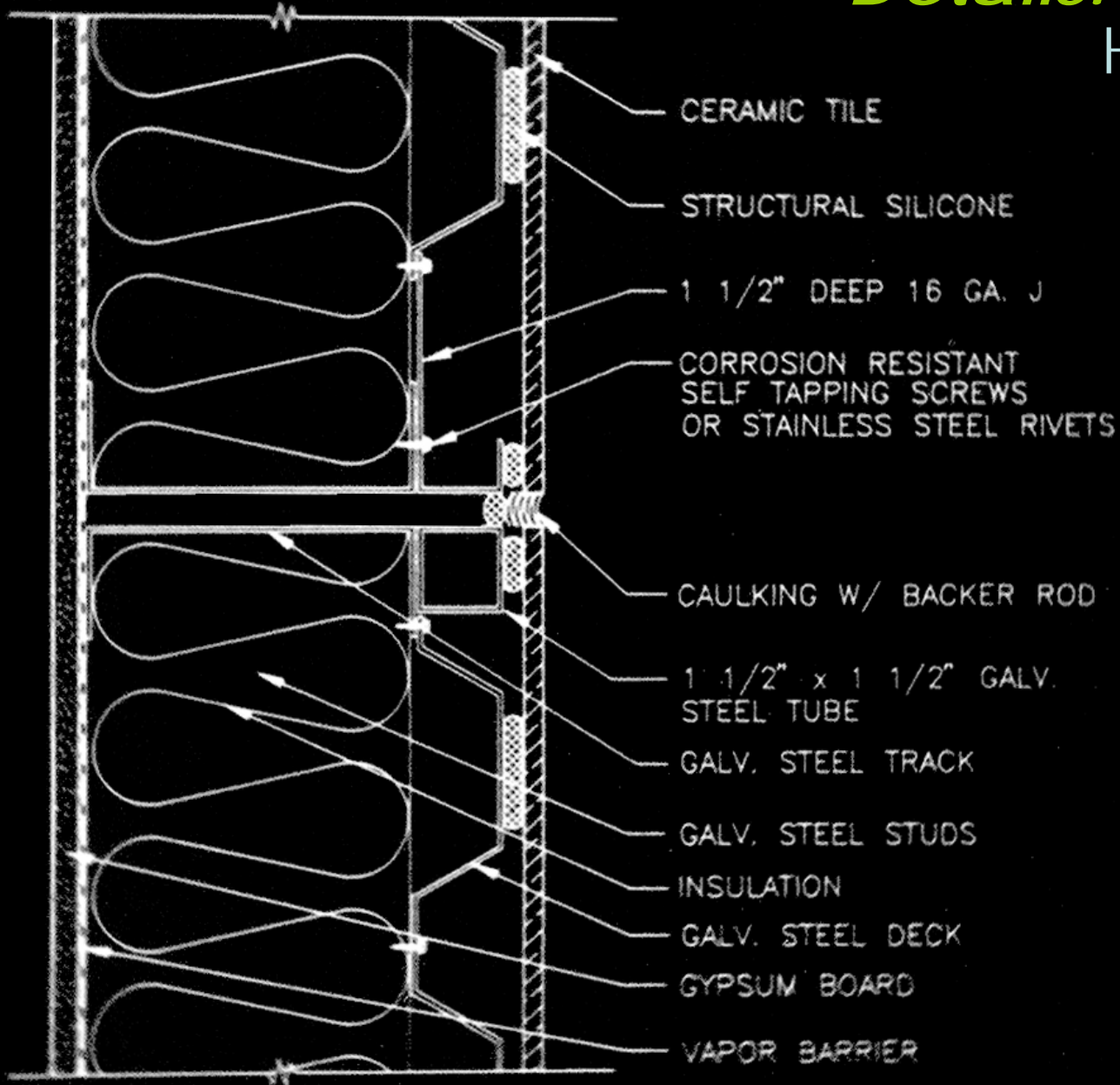
Details: Connections

Horizontal Joint at Spandrel

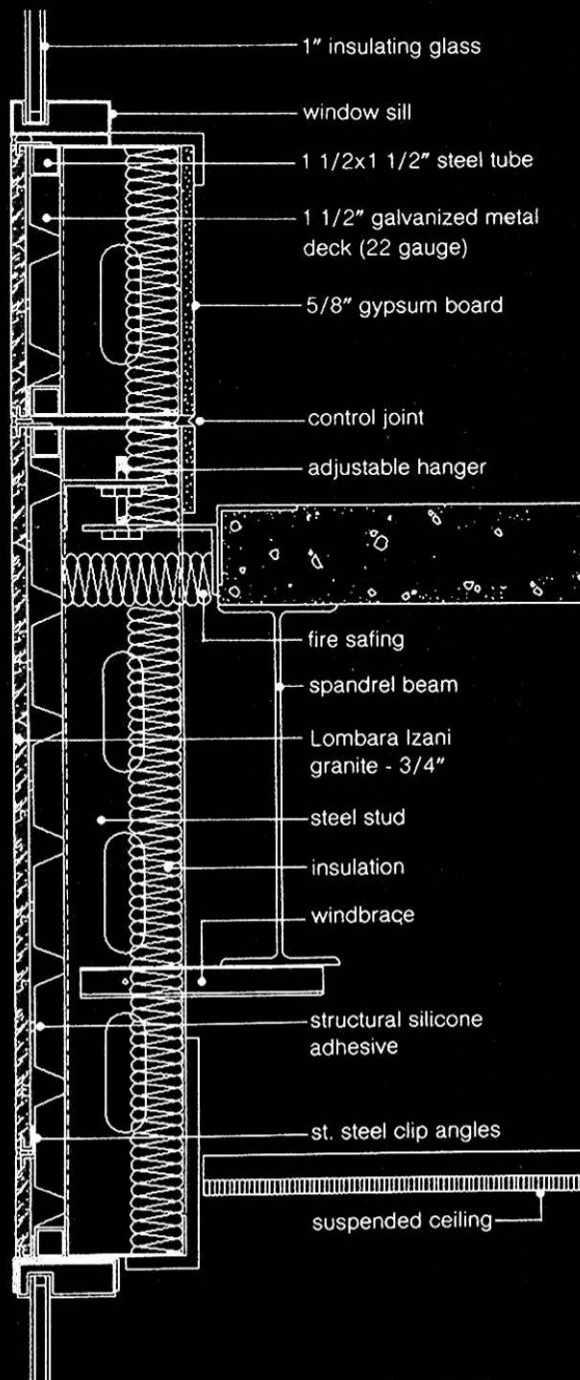


Details: Connections

Horizontal Joint

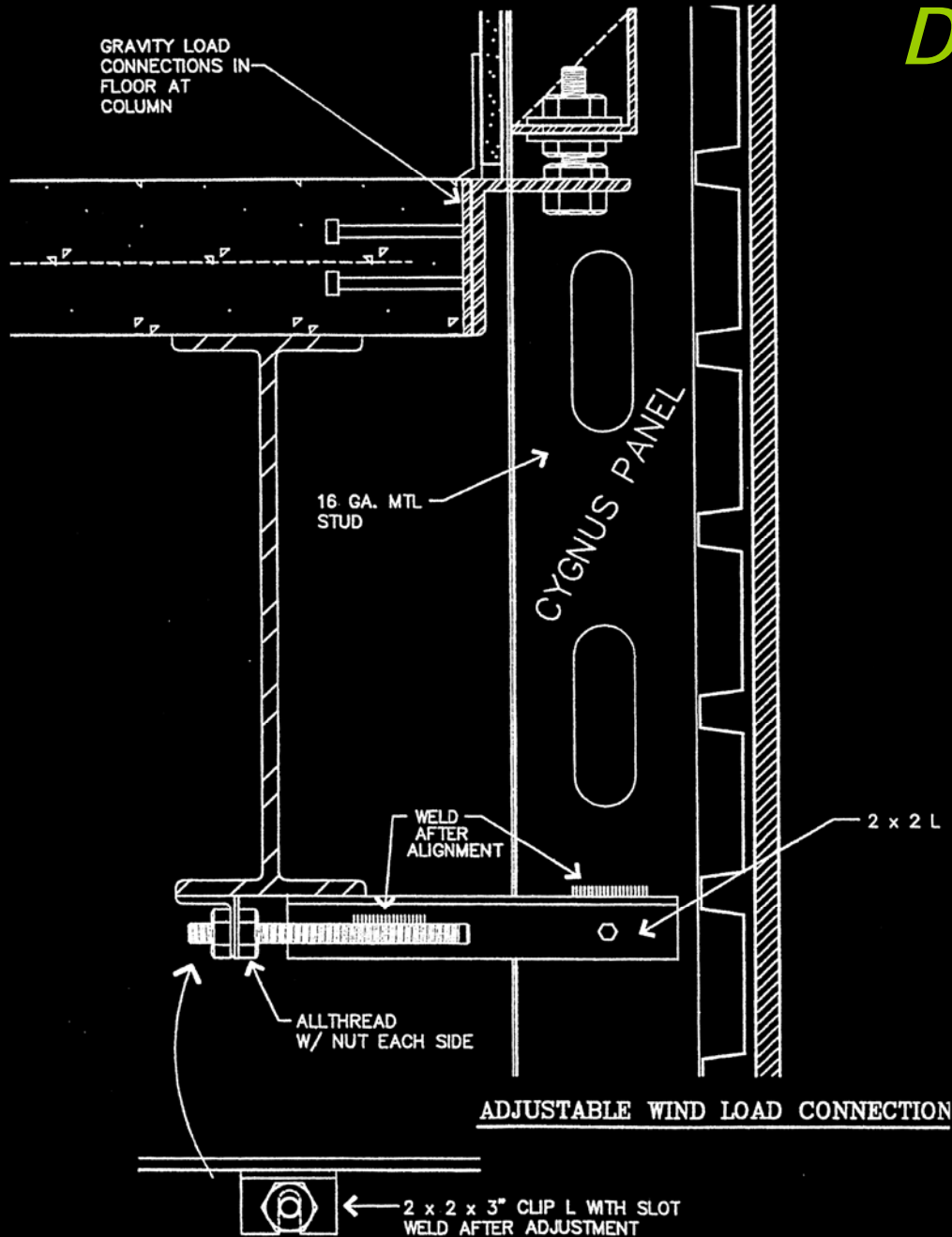


Details: Connections Spandrel/Glazing



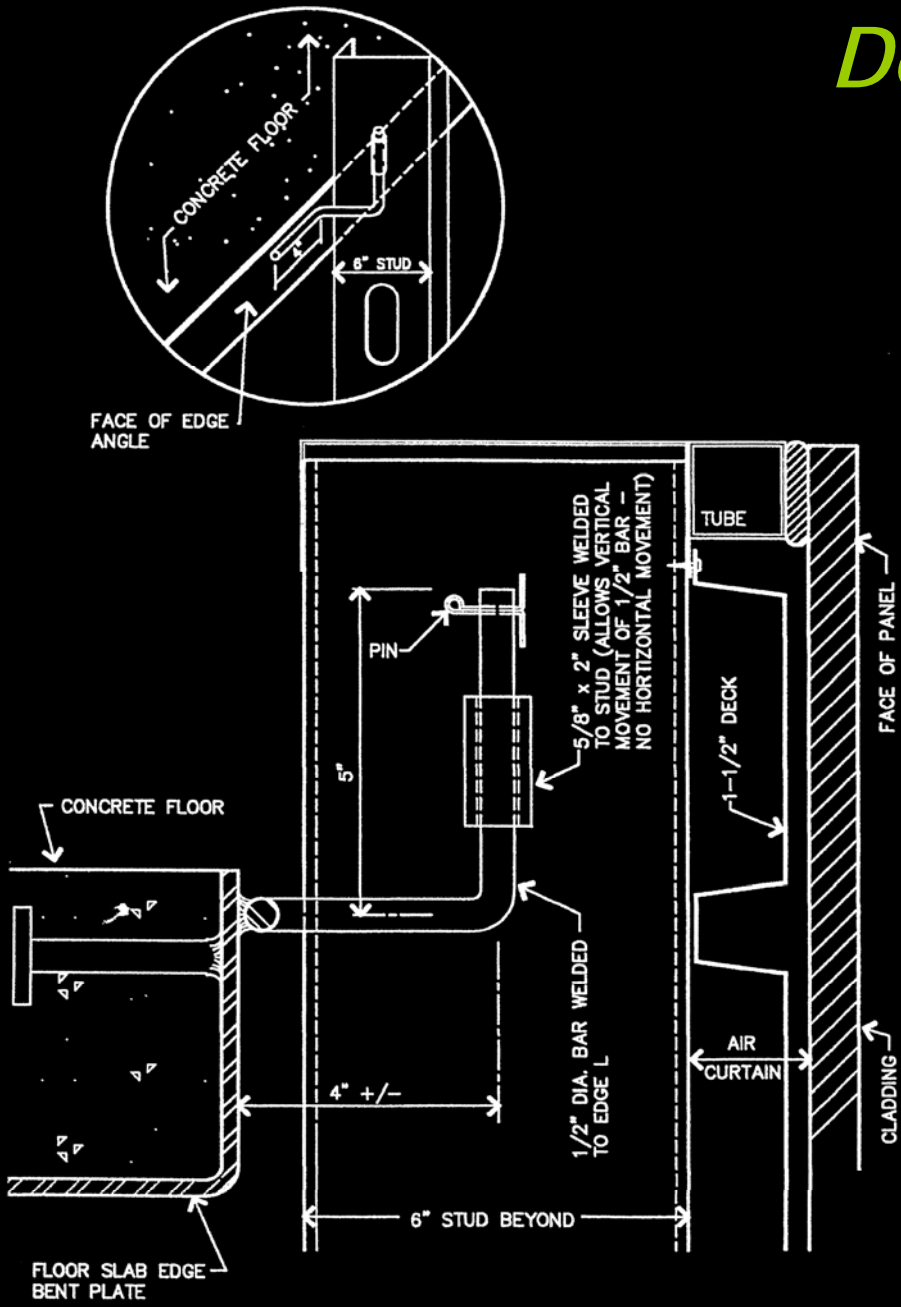
Details: Connections

Adjustable Wind Load Connection



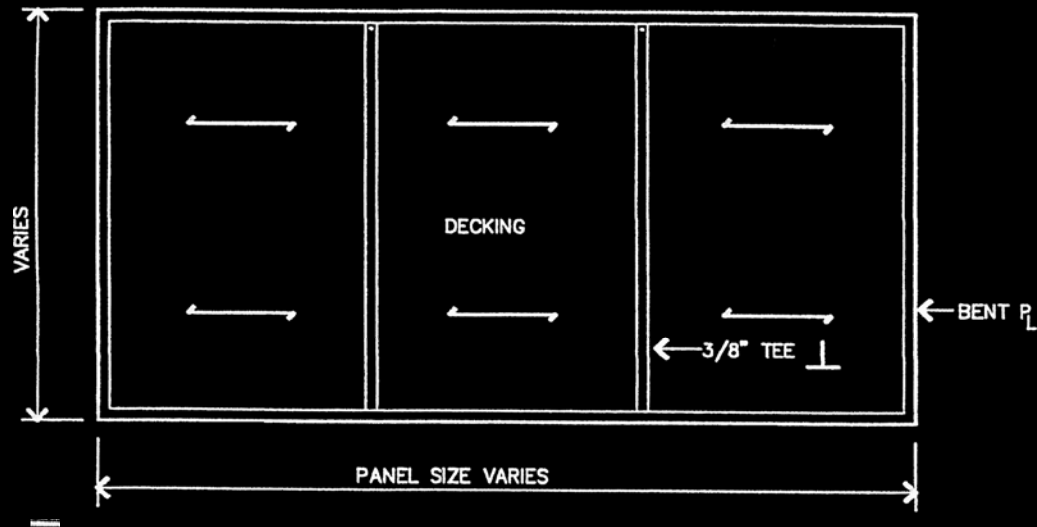
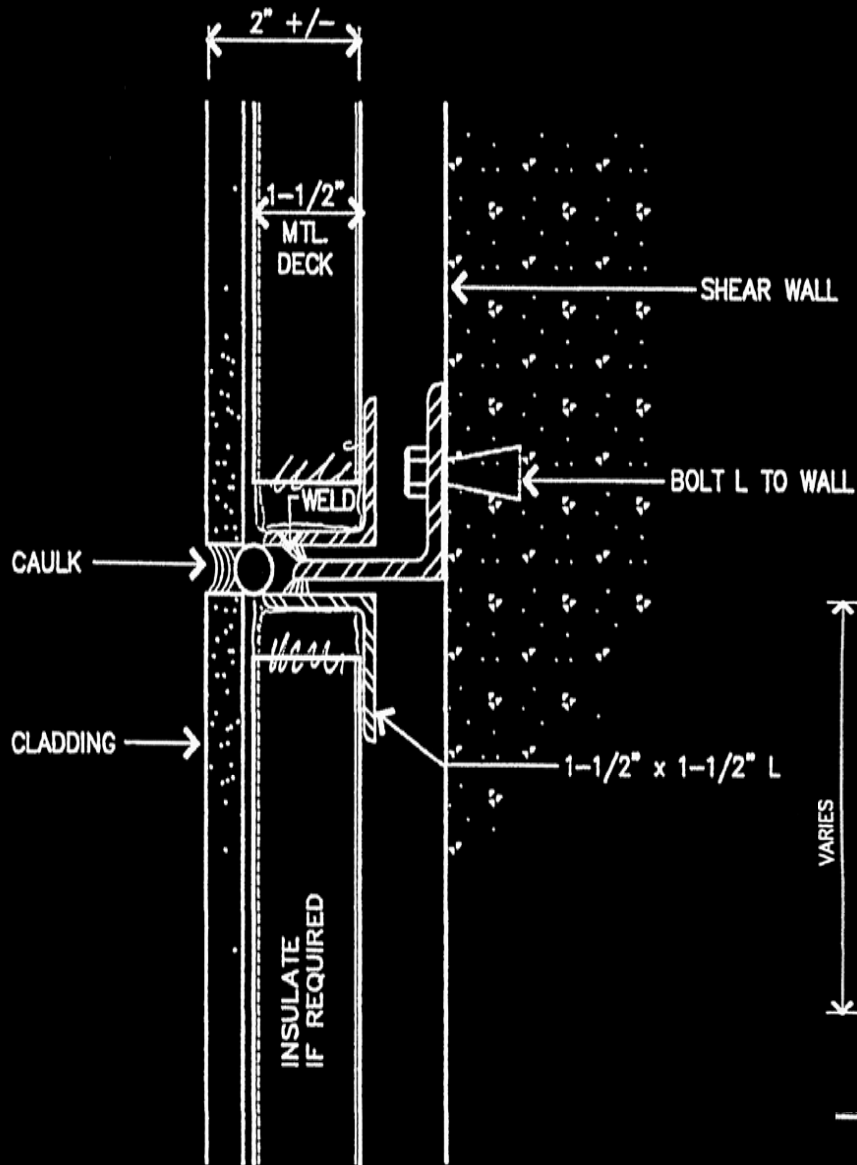
Details: Connections

Wind Load Connection



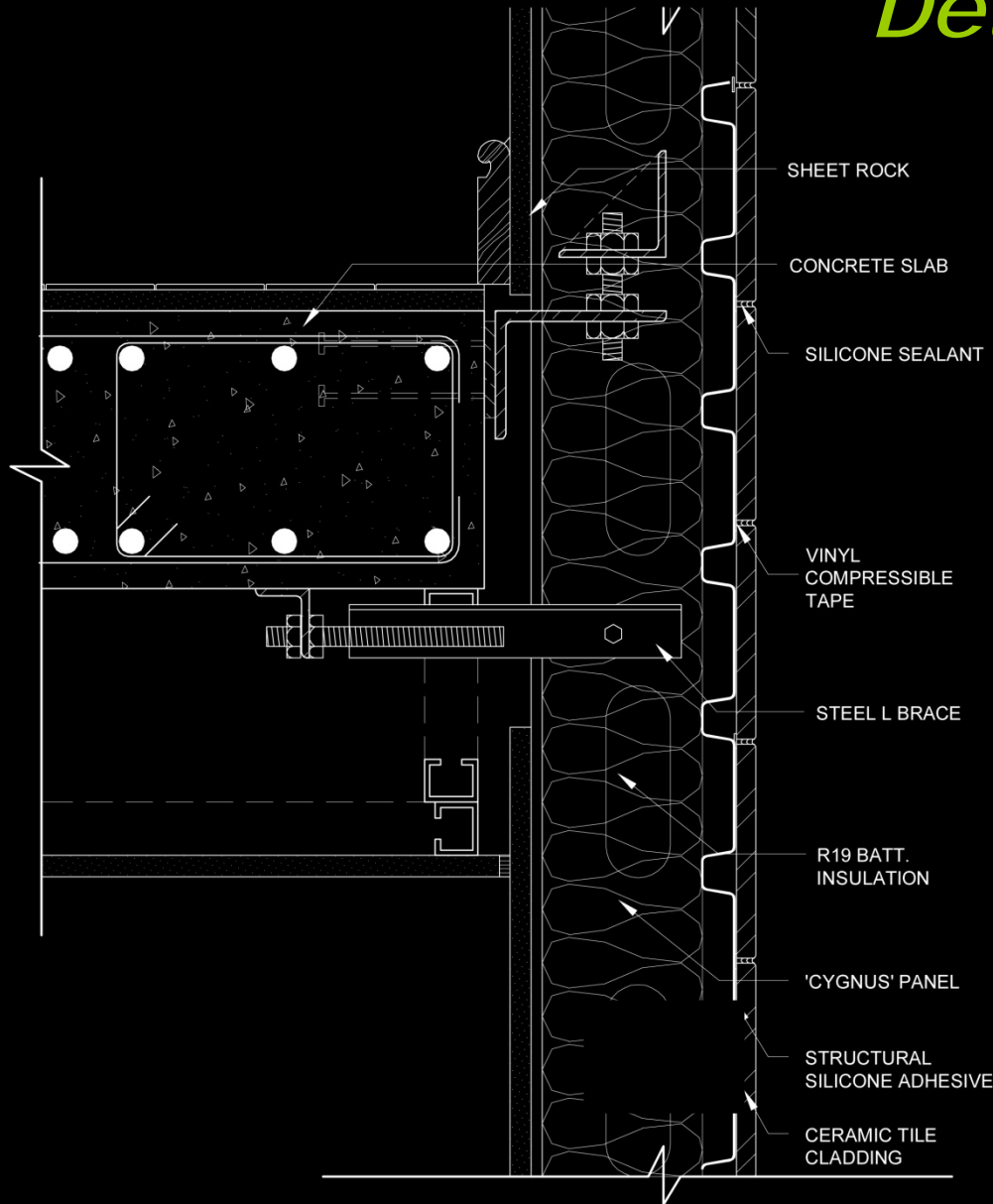
Details: Connections

Shear Panel



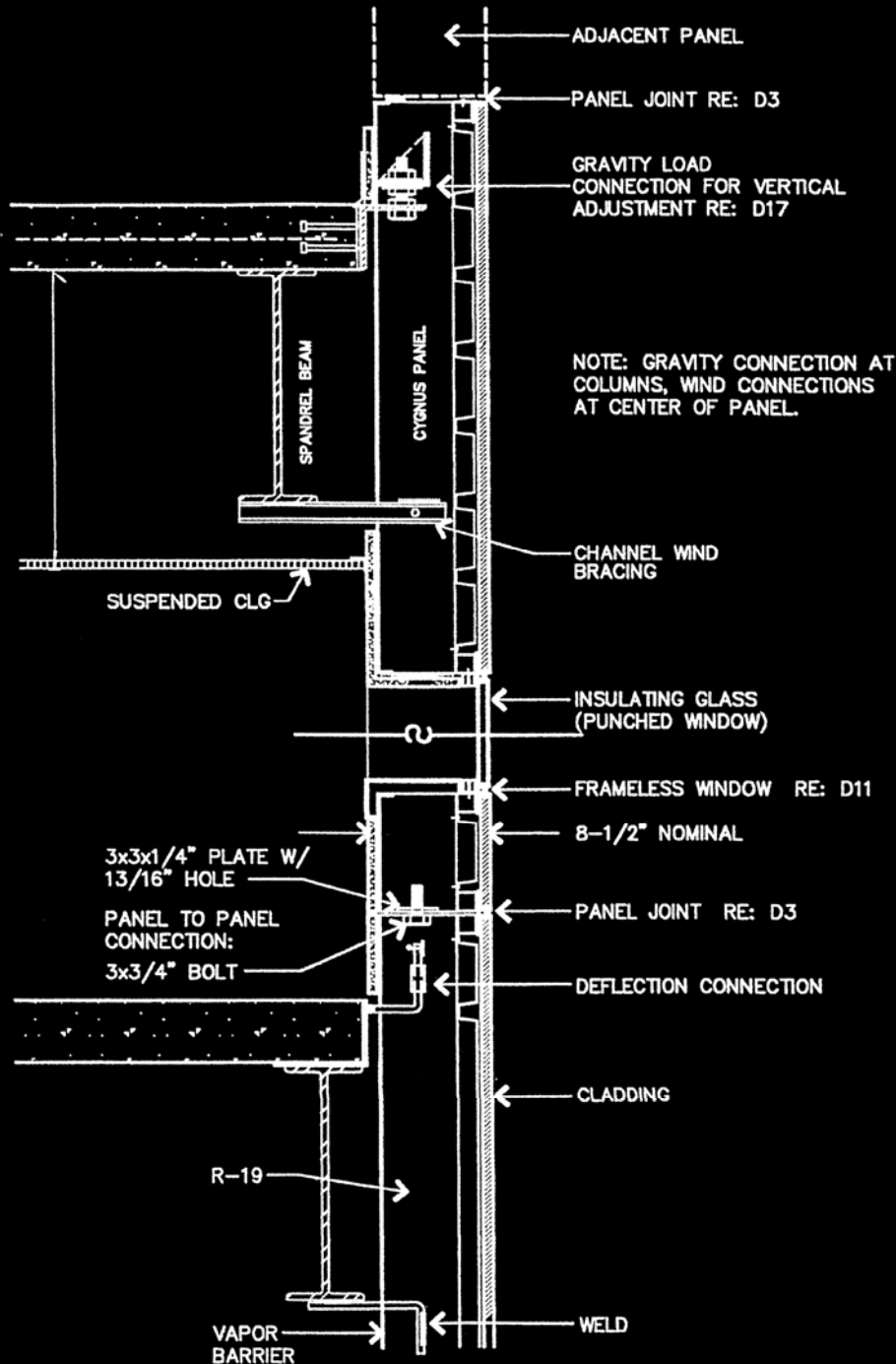
Details: Connections

Concrete Floor Attachment

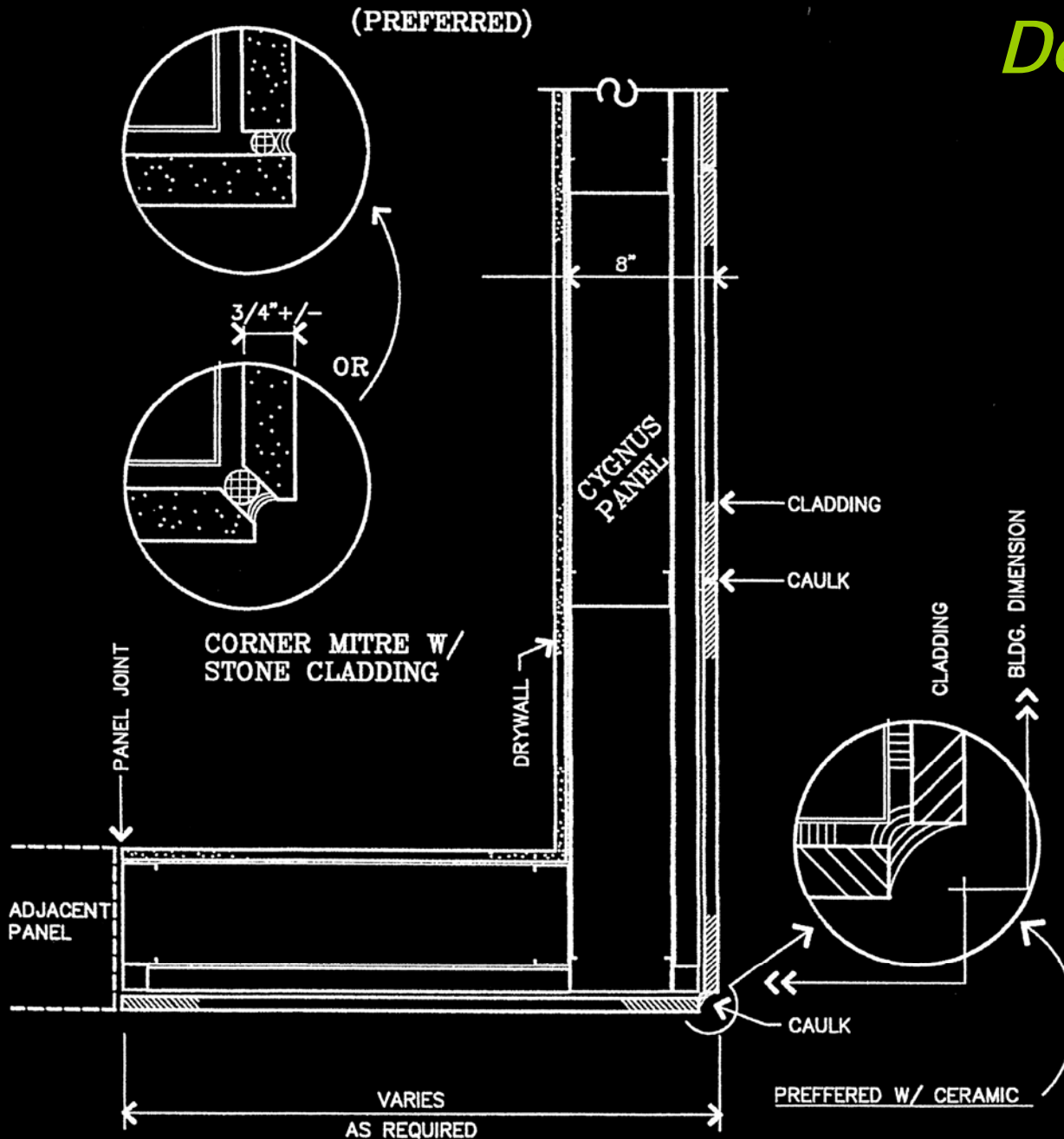


Details: Connections

Punched Window

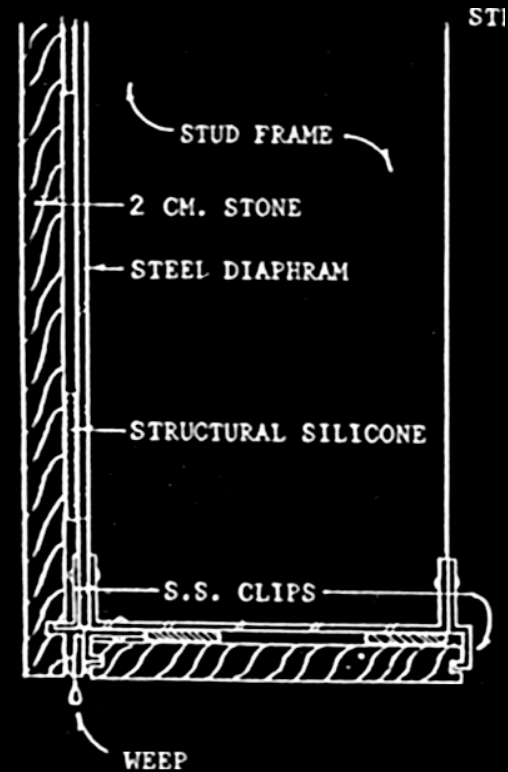
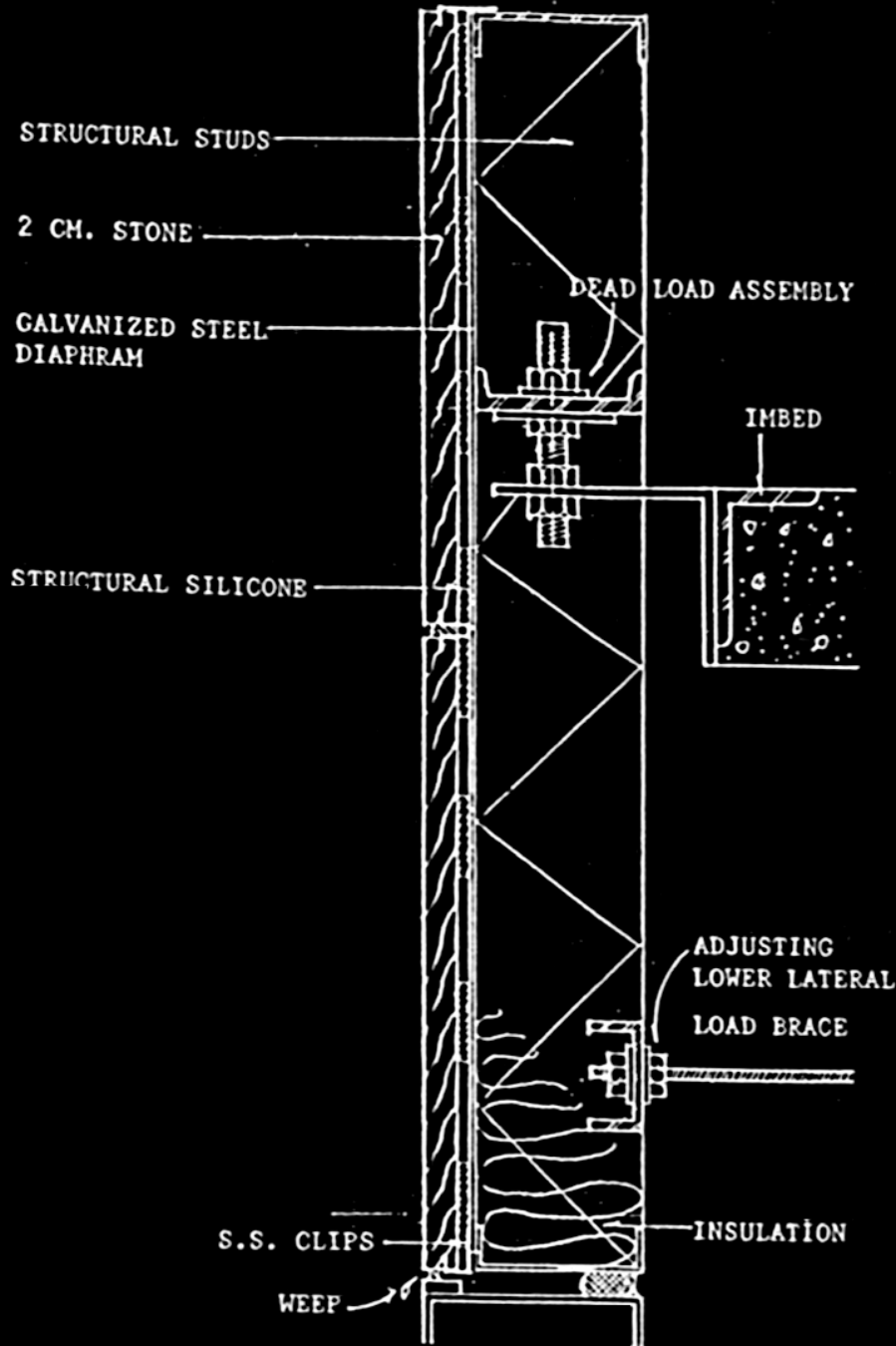


Details: Corners External



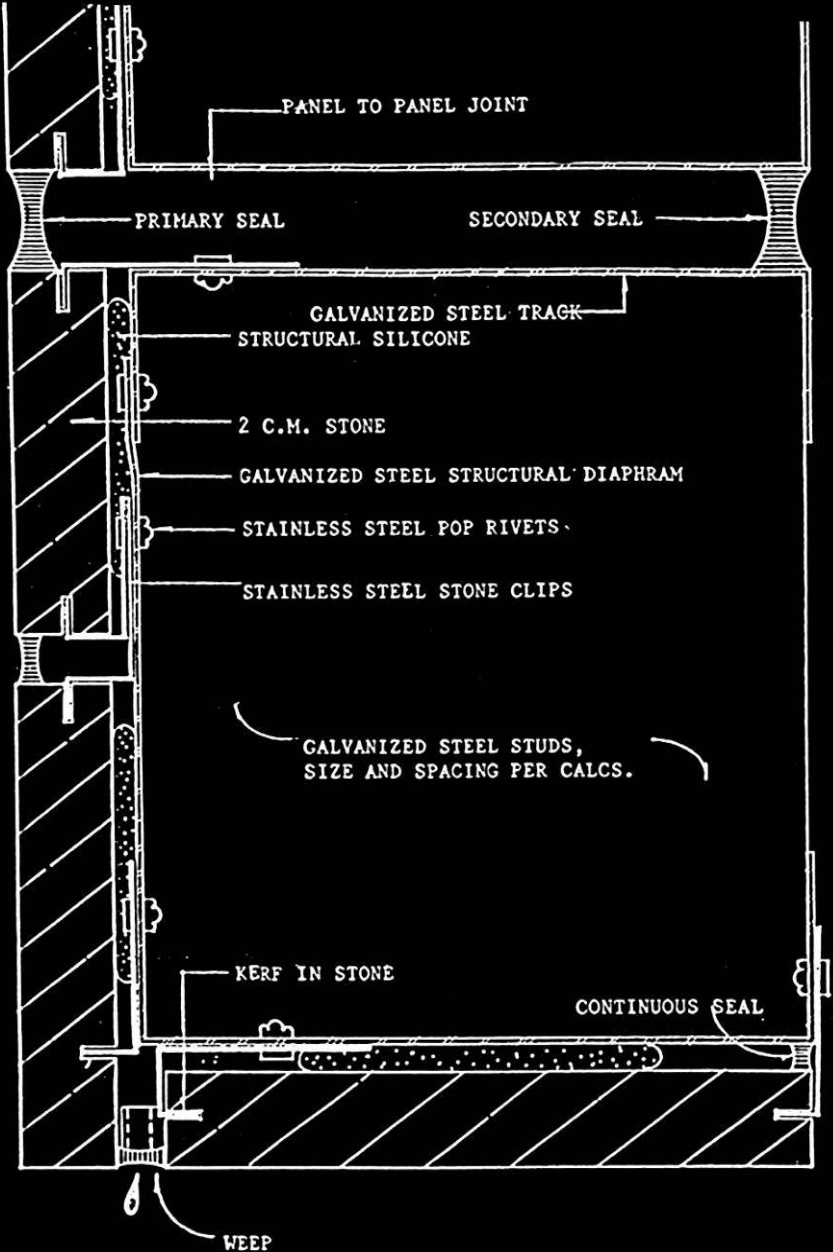
Details: Connections

Section Details



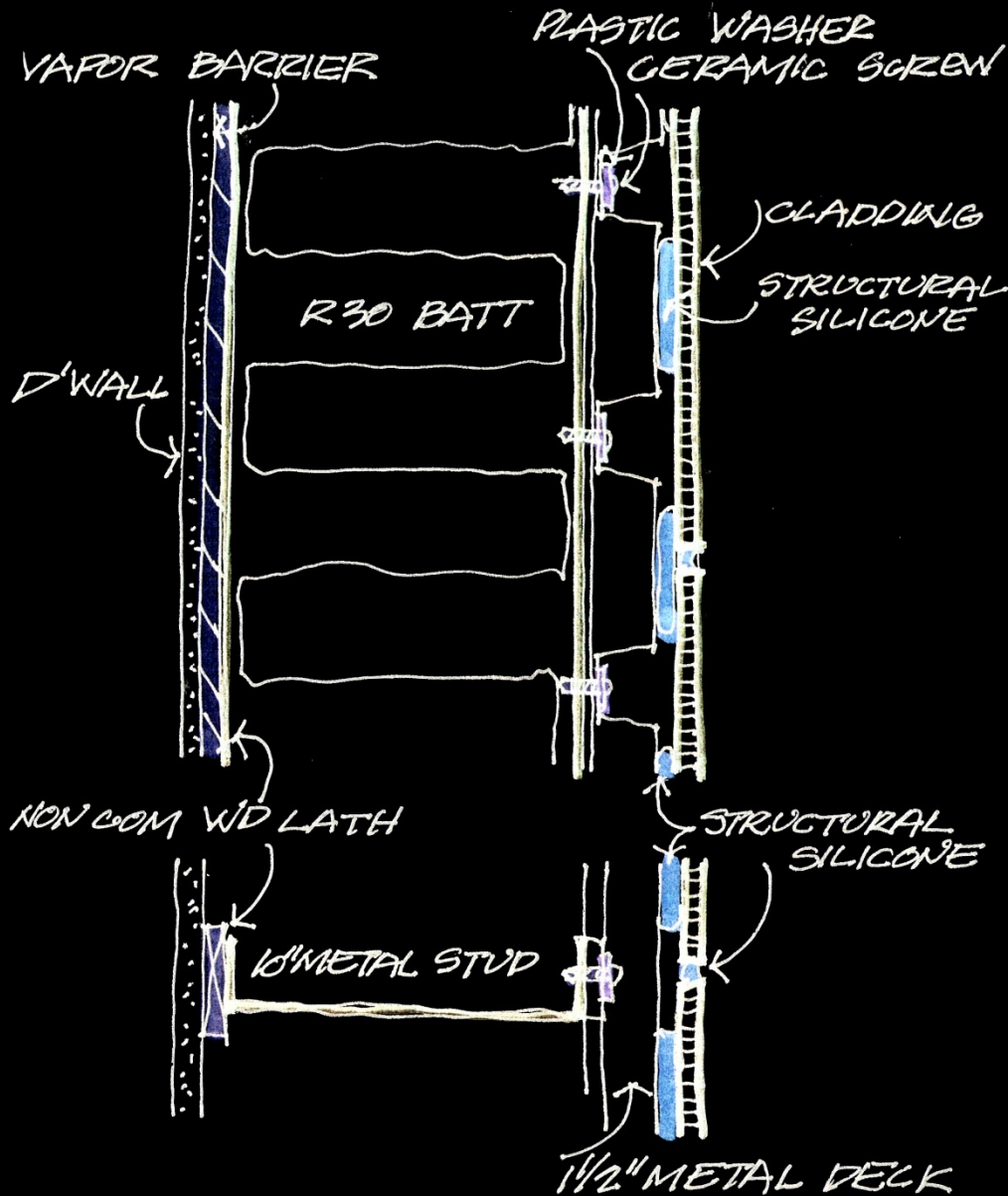
Details: Corners

Soffit Panel



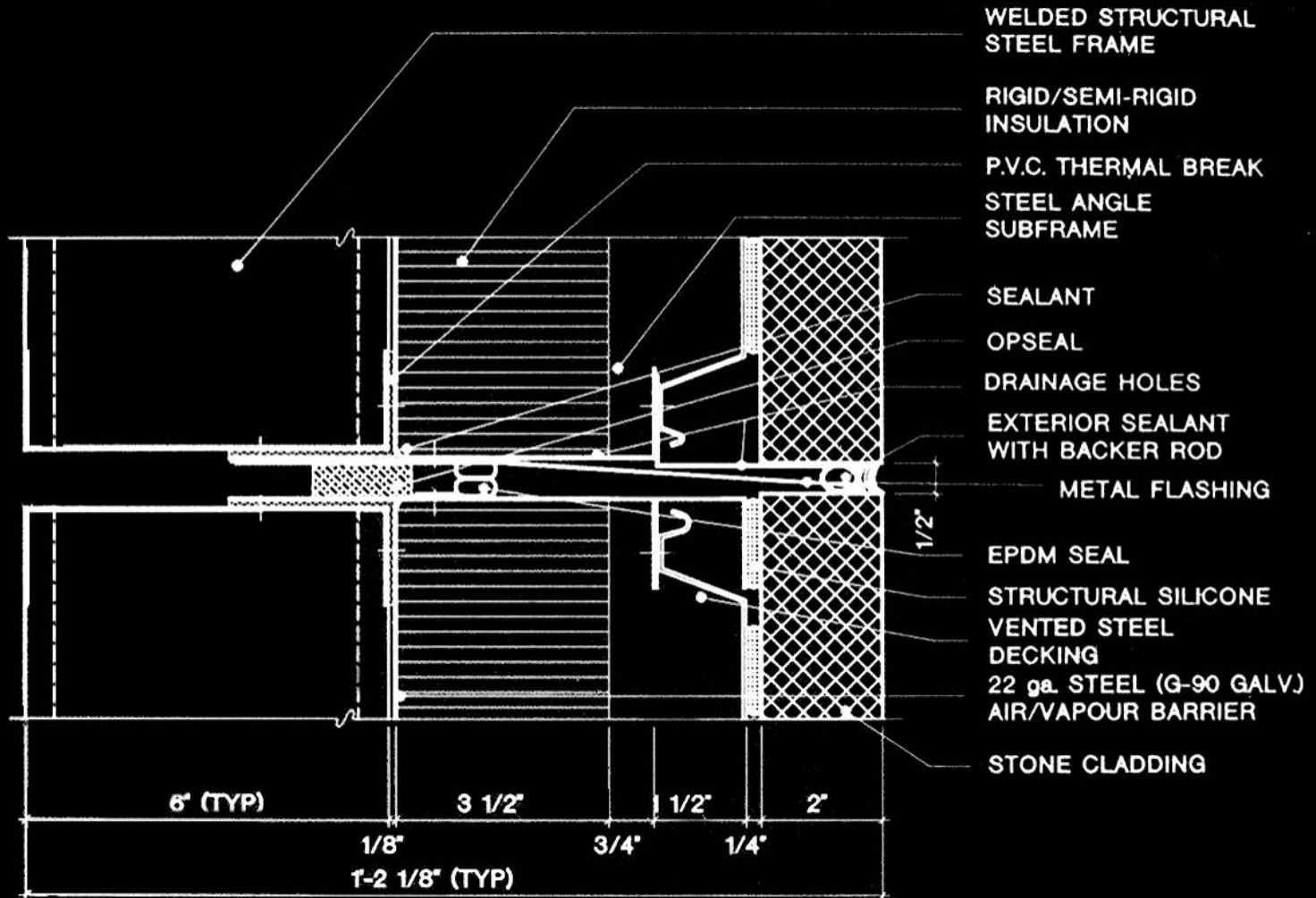
Details: Wall Section

LEED Wall



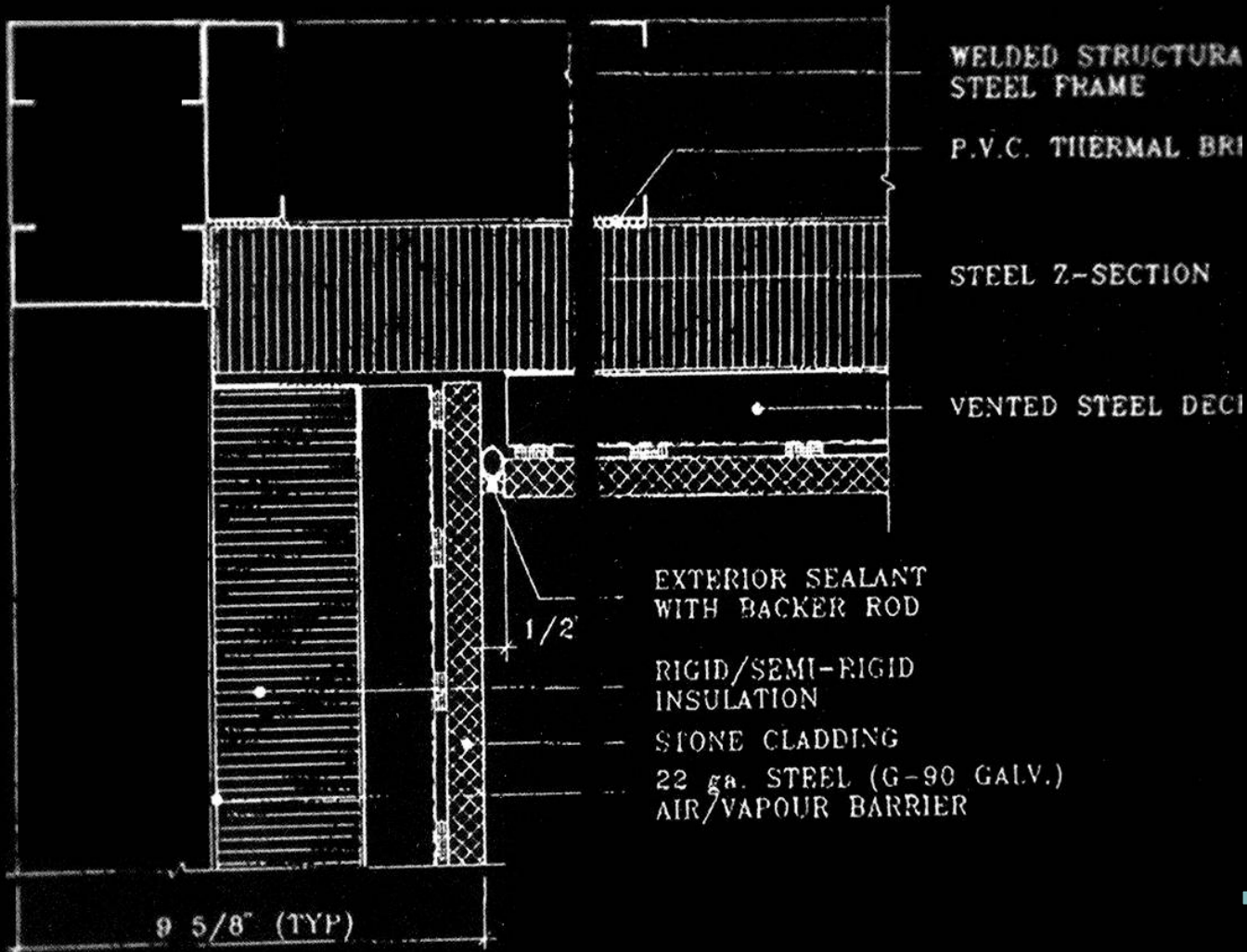
Details: Joints

Canada Wall: Rainscreen Drainage



Details: Corners

Canada Wall



Details: Connections

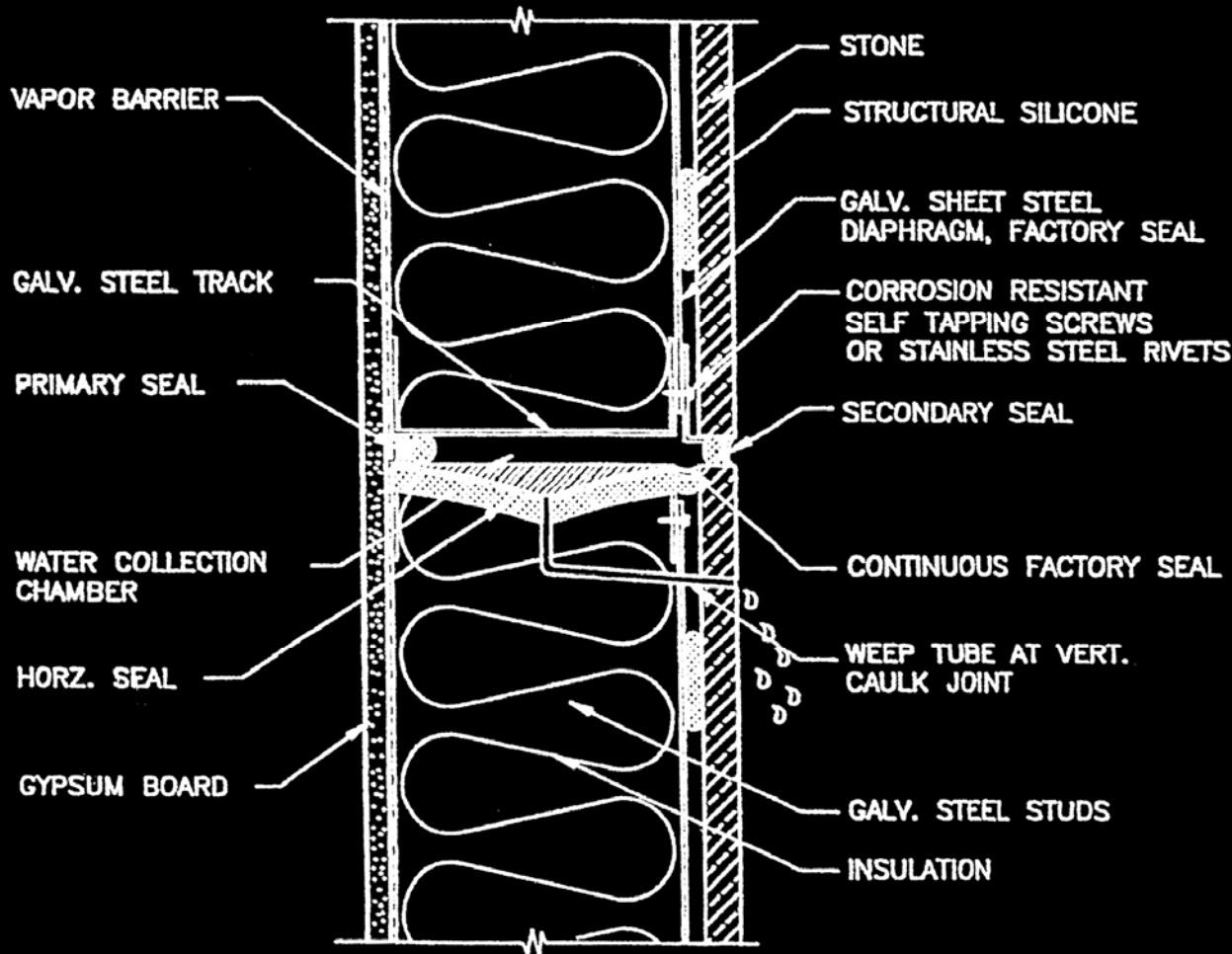
Gutter Weep

COMPOSITE PANEL

PANEL TO PANEL – HORIZONTAL JOINT

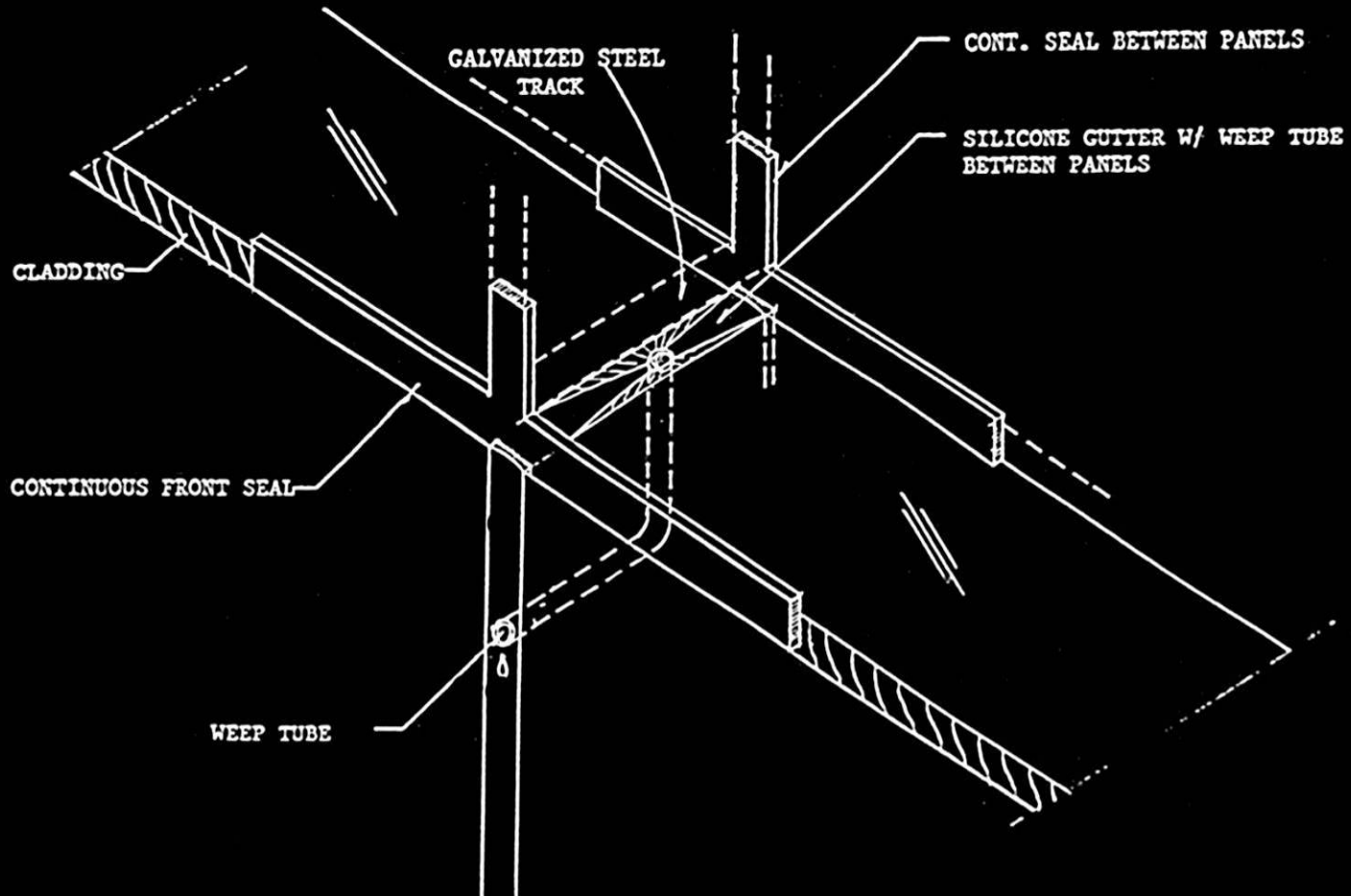
GUTTER WEEP SYSTEM – COMPOSITE PANEL

SECTION CUT BETWEEN ENDS OF SPANDREL PANELS



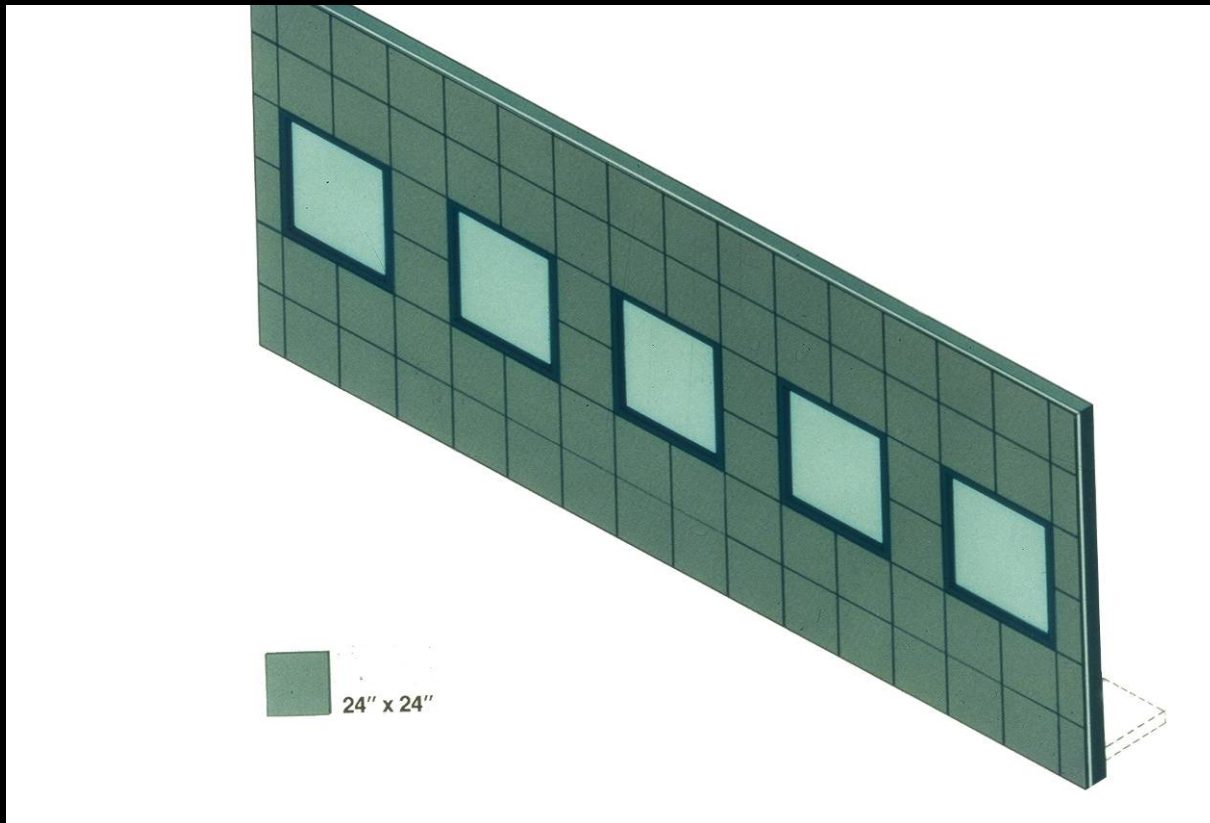
Details: Joints

Secondary Water Barrier & Gutter Weep System



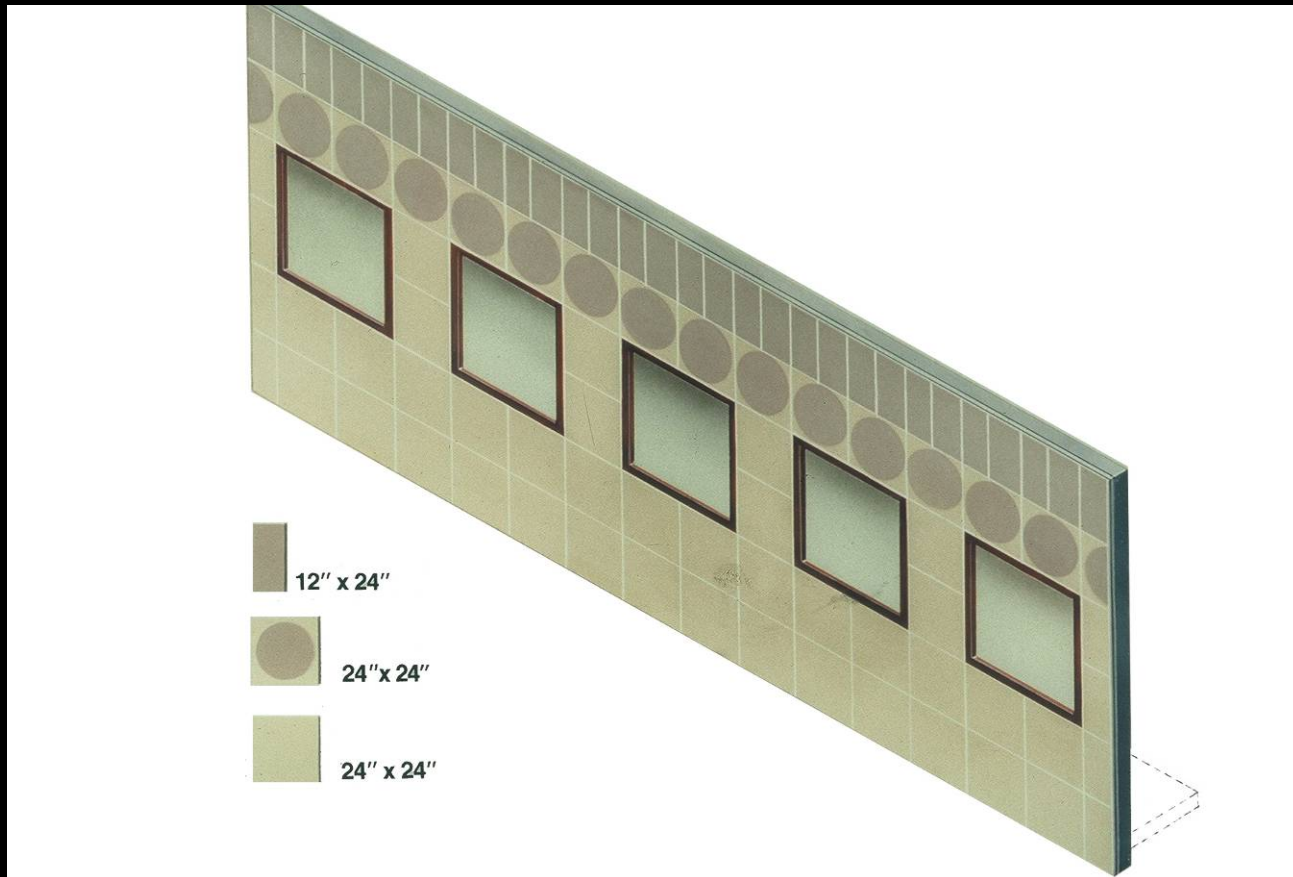
Details: Standard Panel Systems

Punched Window Panel



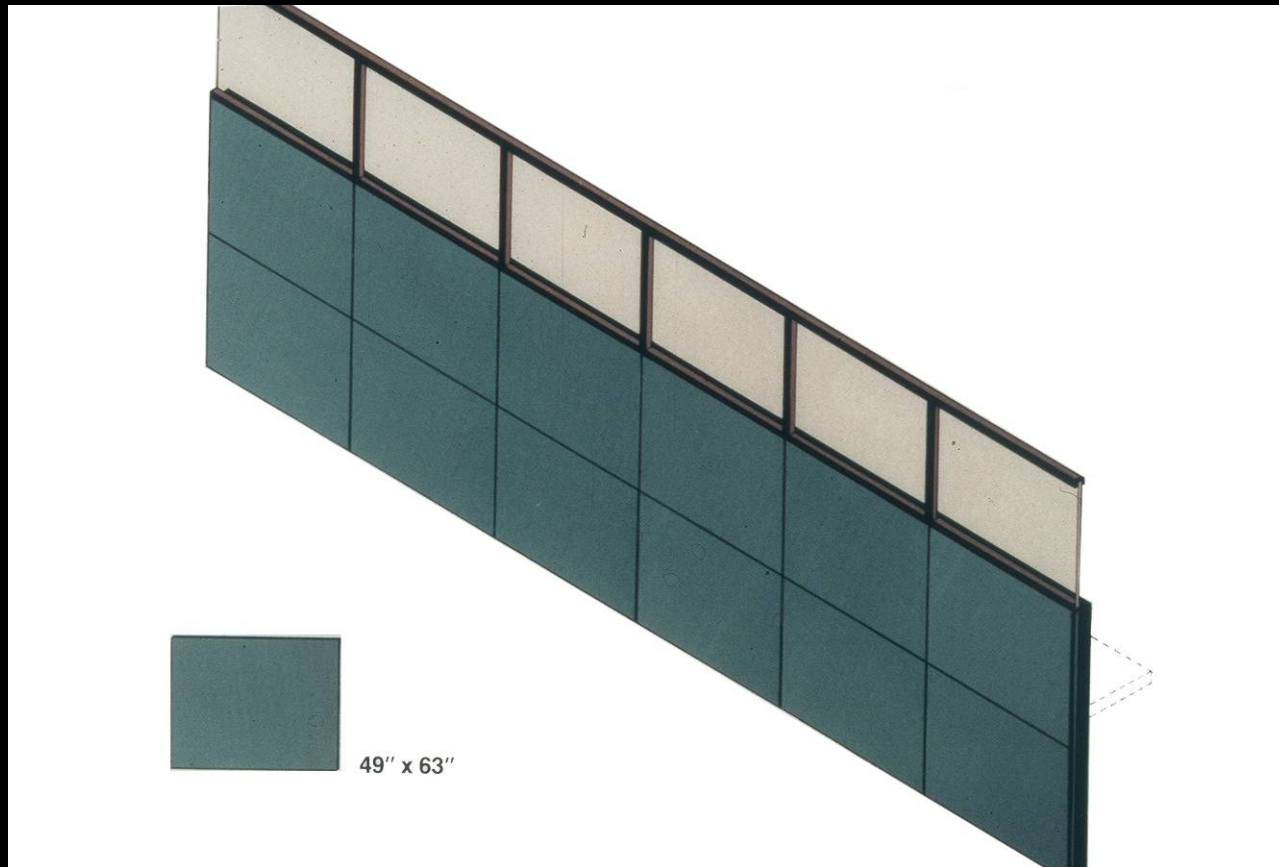
Details: Standard Panel Systems

Punched Window Panel



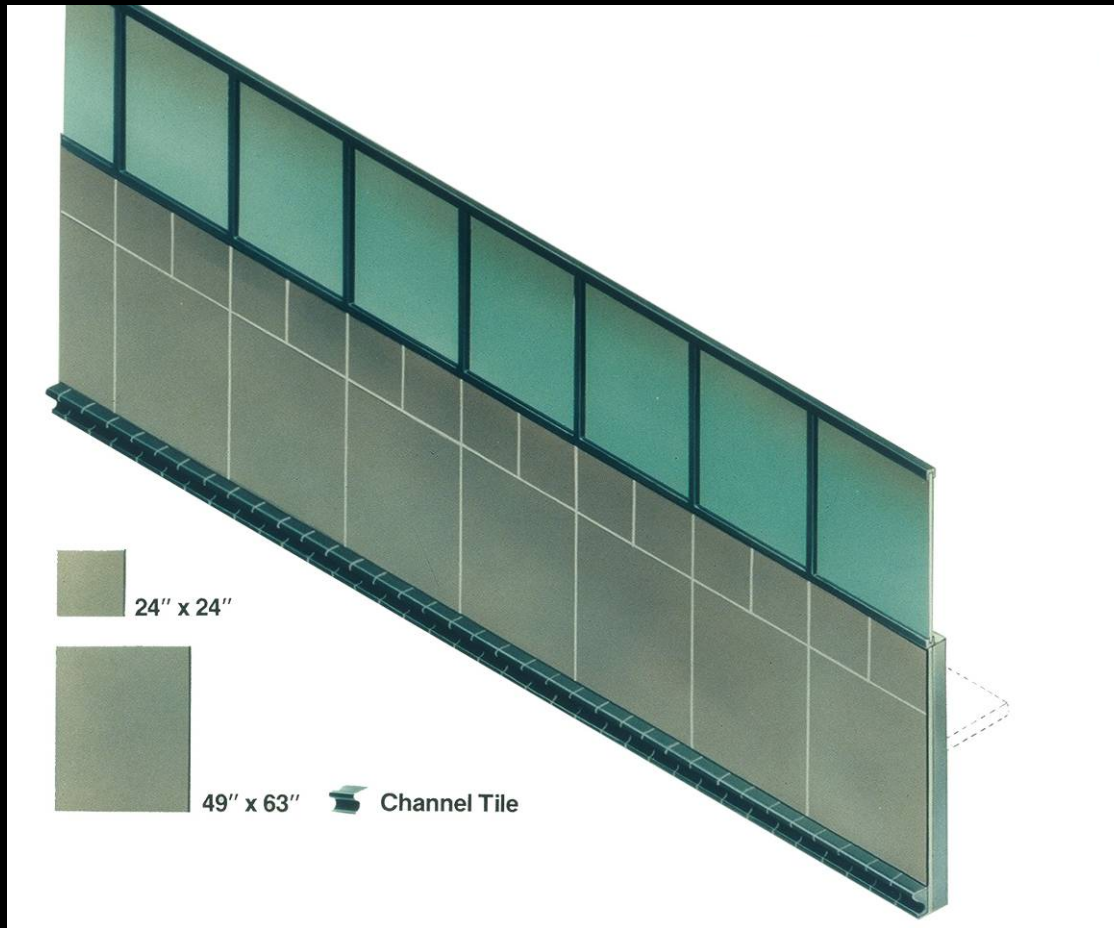
Details: Standard Panel Systems

Spandrel Panel



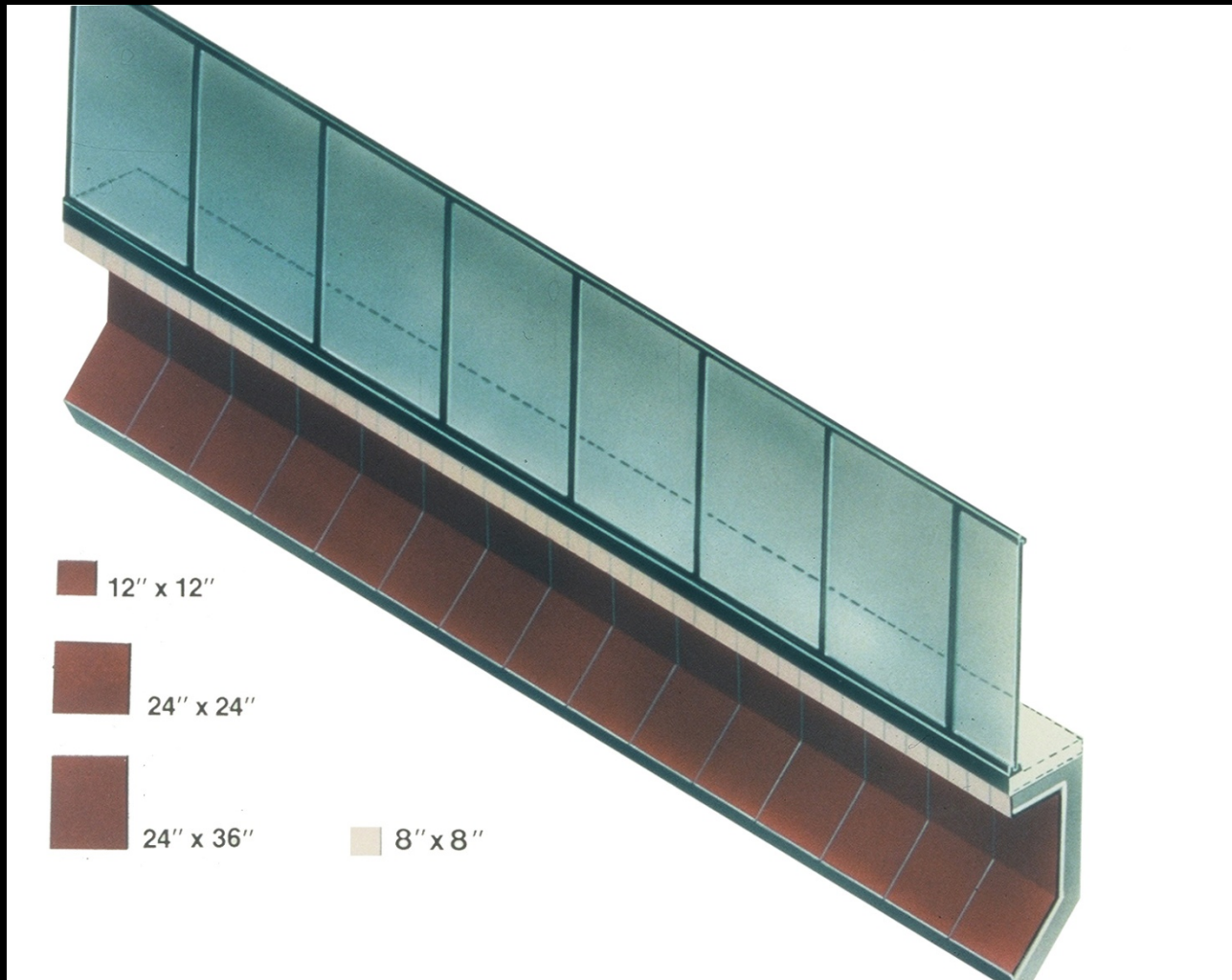
Details: Standard Panel Systems

Spandrel Panel



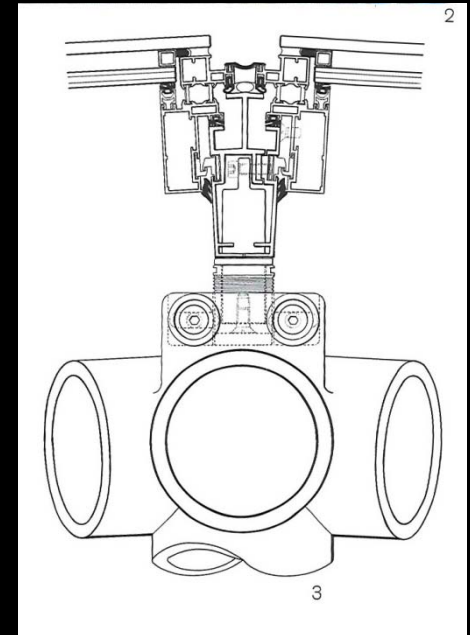
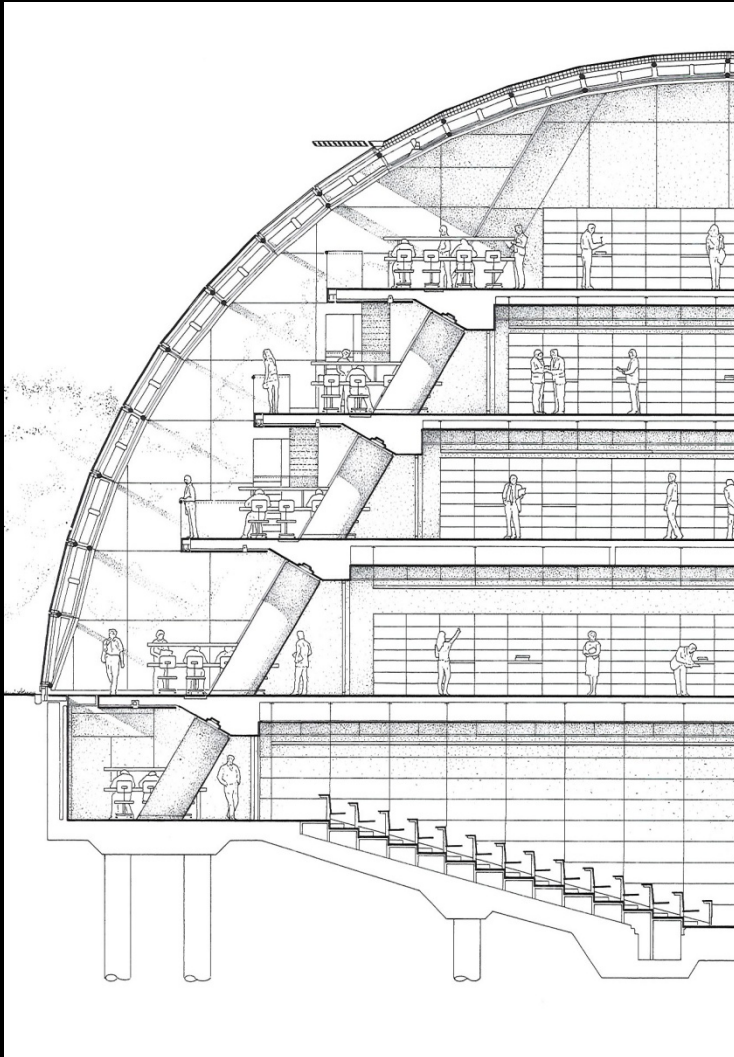
Details: Standard Panel Systems

Formed Panel

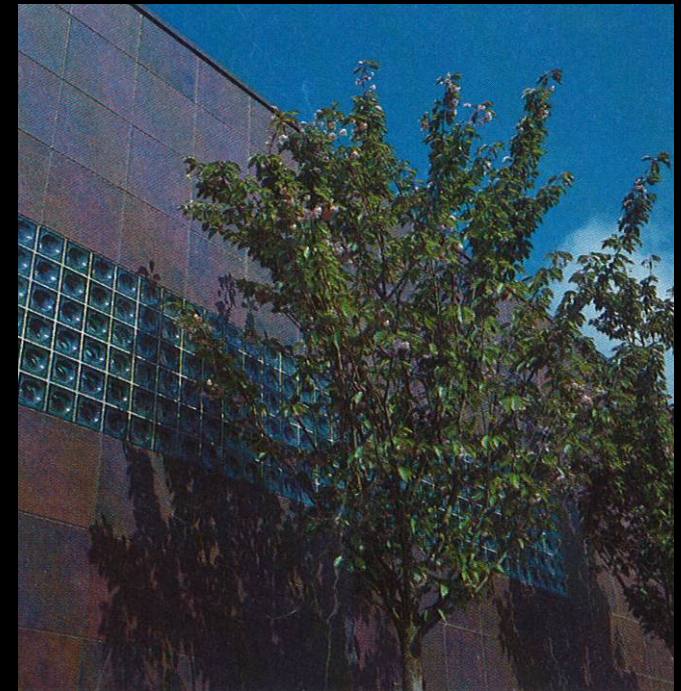


Details: Alternate Silicone Applications

Norman Foster: Faculty of Law, University of Cambridge



Nissan Regional Headquarters & Training Facility Beaverton, Oregon



Uranga Towers

San Antonio, Texas



National Air & Space Museum Washington D.C.



IBM Branch Office Building

San Diego, California



Naval Intelligence Center

Suitland, Maryland



Russell Building Tacoma, Washington



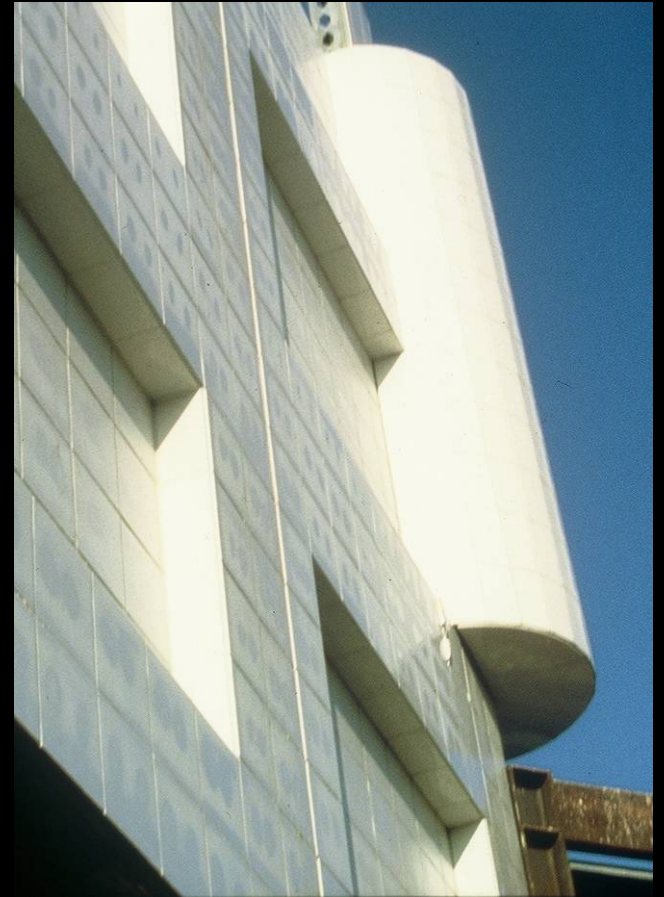
Pacific Centre Block 32 Tower

Vancouver, British Columbia



Mayo Clinic/Group Practice

Jacksonville, Florida



Jamboree Phase II A

Irvine, California



Team Disney - The Michael D. Eisner Building

Burbank, California



Cobo Hall

Detroit, Michigan



University of Canterbury School of Law

Christchurch, New Zealand



AT & T Building

Irvine, California

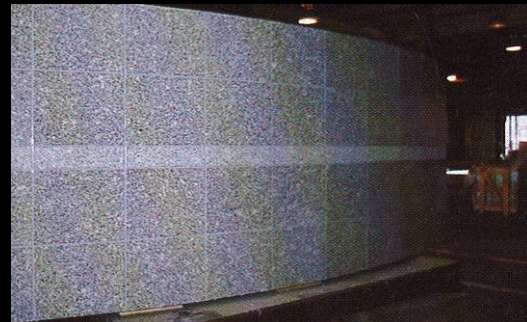


3M Canadian Head Offices

London, Ontario



The Citadel Denver, Colorado



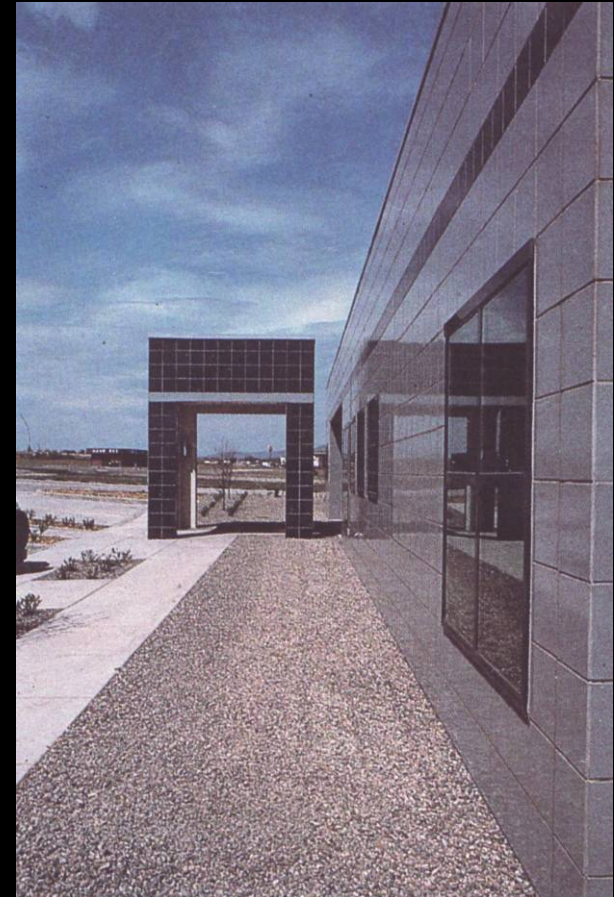
TRW

Fairfax, Virginia



Central Bank of Chapel Hills

Colorado Springs, Colorado



Rio Vista Plaza San Diego, California



Ceramico Manufacturing Facility

Auckland, New Zealand



FIG Garden Financial Center Phases I, II

Fresno, California



Pasadena Gateway

Pasadena, California



Premier Building

Bellevue, Washington



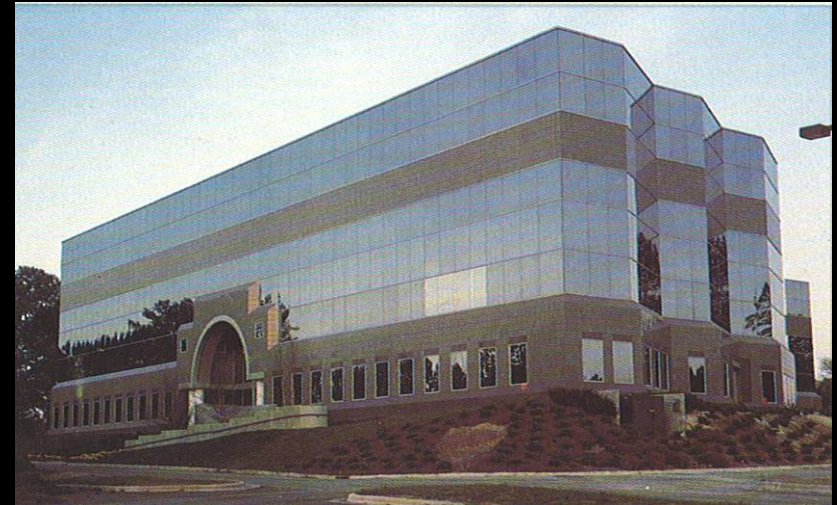
160 W. Santa Clara

Santa Clara, California



Headquarters Park Office Complex

Durham County, North Carolina



Production Case Study: Jamboree Center



- Architect:
Skidmore, Owings & Merrill
- General Contractor: Koll Construction Company
- Panel Manufacturer: Paoli Construction
- Owner: The Irvine Co.
- Building Address: 5 Park Plaza, Irvine, CA
- Description/Use: 20-Story Office
- Cladding: Travertine Marble

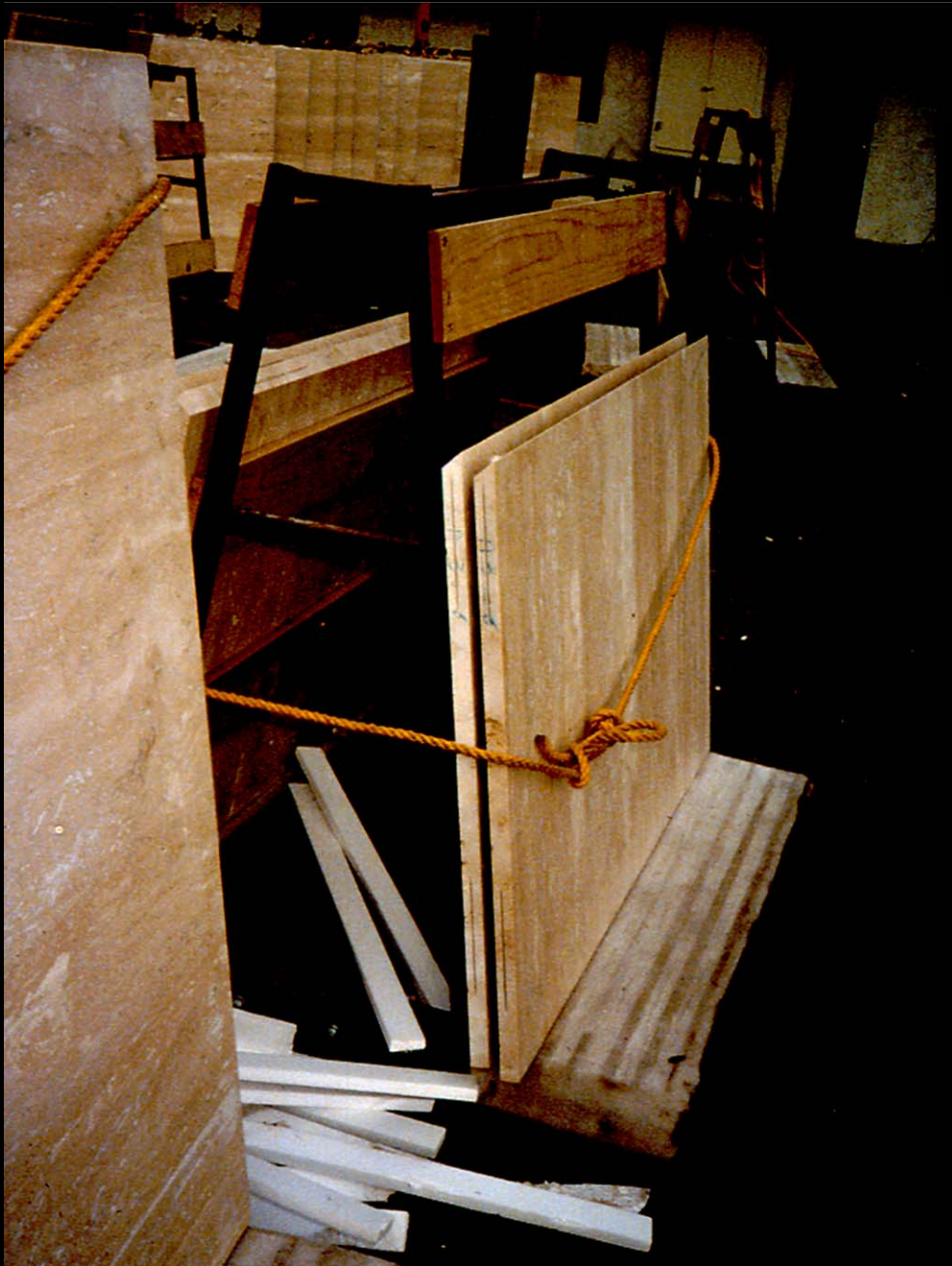






 **CYGNUS** Panel System



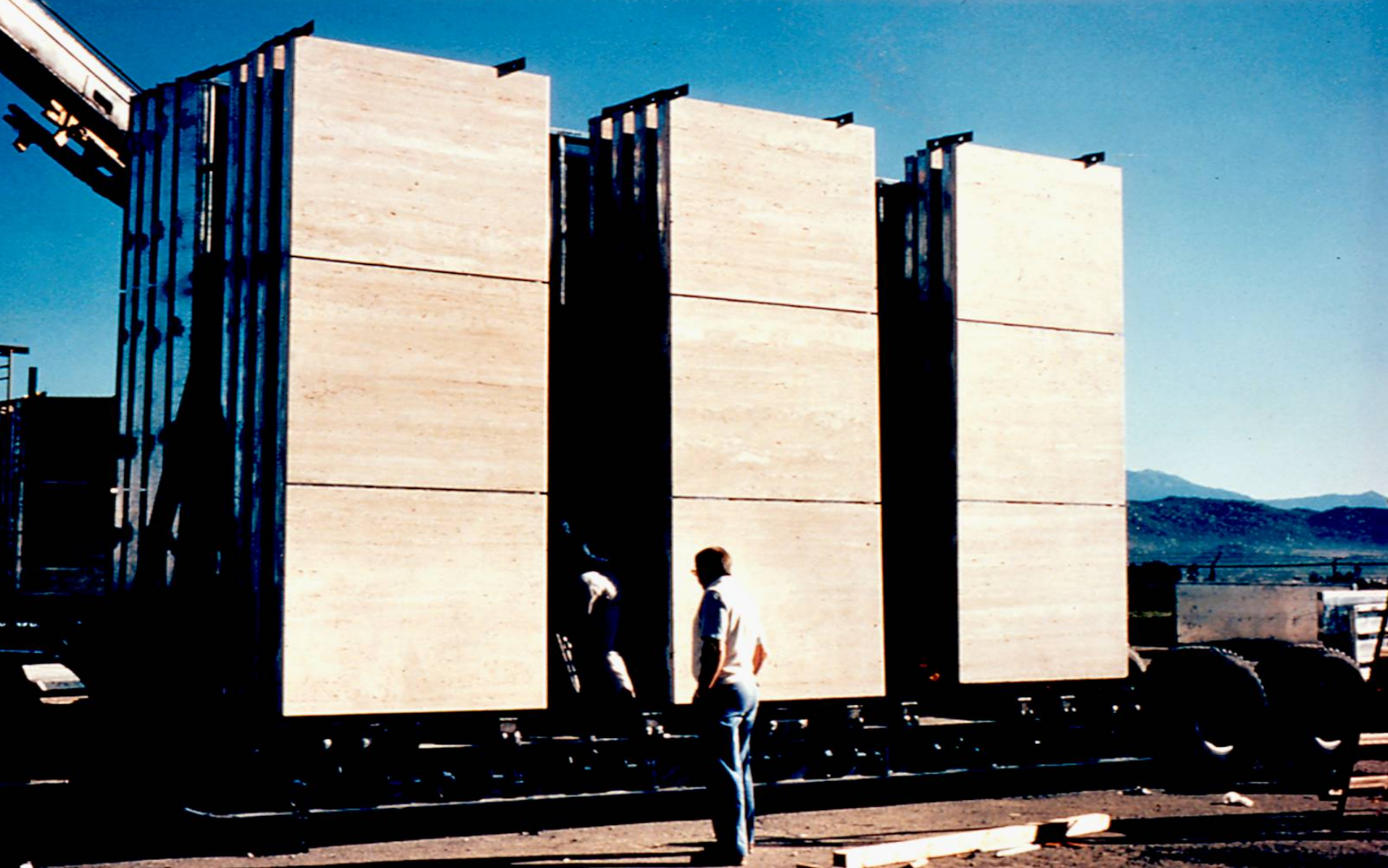



CYGNUS Panel System










CYGNUS Panel System






CYGNUS Panel System




CYGNUS Panel System




CYGNUS Panel System









Detailed Panel Fabrication

Nissan Headquarters
Building Case Study

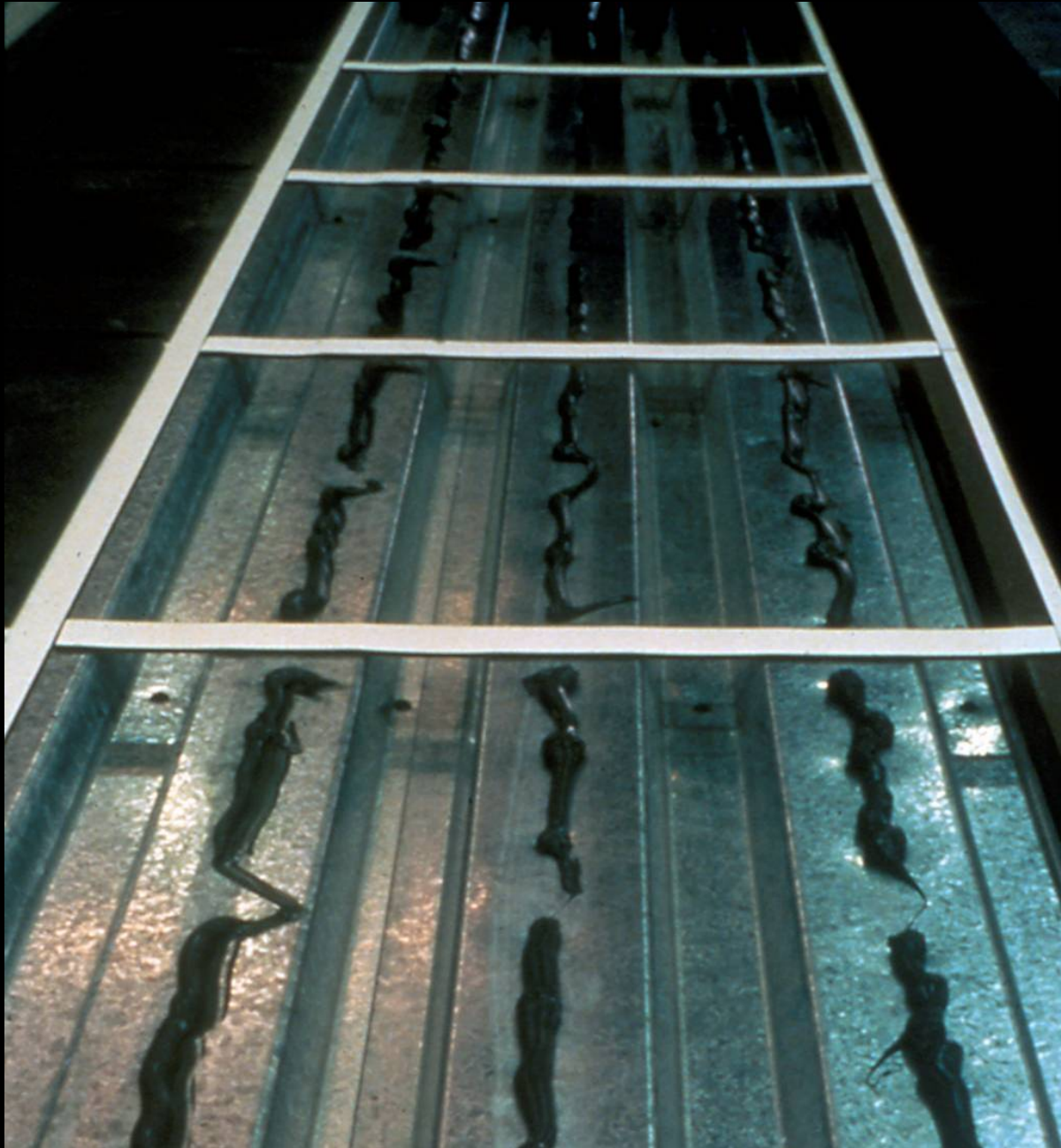







CYGNUS Panel System







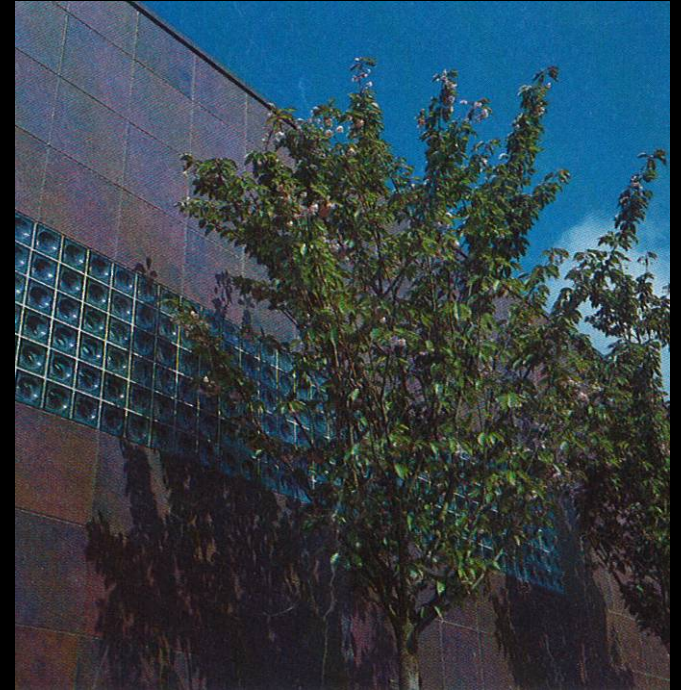
CYGNUS Panel System




CYGNUS *Panel System*




CYGNUS Panel System



Specifications & Testing

Approved Laboratory Tests

Construction Research Laboratory, Inc., Miami, Florida: September 20, 1982; December 10, 1985; February 12, 1987; October 19, 1987; November 30, 1987; November 16, 1989

Smith-Emery Company, Los Angeles, California: March 12, 1987; March 26, 1987

Construction Consulting Laboratory, Ontario, California: September 21, 1987

Building Research Association of New Zealand, Wellington, New Zealand: April 14, 1988

National Building Technology Centre, Sydney, New South Wales, Australia: December 23, 1987

Tests Performed

Air Infiltration by Static Pressure
(ASTM E283)

Water Infiltration by Static Pressure
(ASTM E331)

Water Infiltration by Dynamic Pressure
(NAAMM TM-1-68T; AAMA TM-1-76)

Structural Performance
(ASTM E330)

Thermal Cycling Test

Seismic Performance at 200% Design
Displacement (1.42")

Fire Resistance Tests of Elements of Building
Construction
(AS 1530.4-1985)

Code Approvals

NER #313

Building Officials and Code Administrators
International, Inc.

International Conference of Building Officials

Southern Building Code Congress
International, Inc.

Performance

The Cygnus Panel has passed all tests.

Results of the tests are available through
Cygnus, Inc.

Cygnus 2010 Services

- Licensee Support
 - Marketing Material
 - Technical Data
 - Testing
 - Engineering & Design
 - Full Submittal Service
 - Shop Drawing
 - Manufacturing Data
 - No Samples
 - Bidding Assistance

Highlights

- The only panelized system to allow installation of the **large size** ceramic tile on building extension
- Economical way to erect maintenance-free stone & tile skin with shop controlled industrial process (**more cost effective than curtain wall or clips**)
- Energy efficient, thermally broken, **environmentally conscious** wall options
- **Full support** from licensor
 - Technical
 - Marketing
 - Pre-Construction, Construction Phase, Final Acceptance Assistance



Thank You


CYGNUS Panel System